



swisherinc.com

## OWNER'S MANUAL

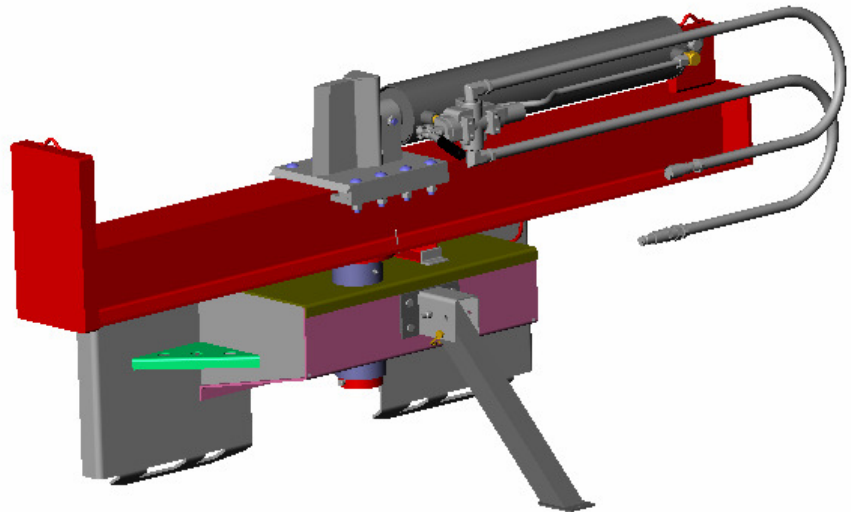
**MODEL NO.**  
**LS5-24**  
**LS5-24S**

### IMPORTANT

Read and follow all Safety  
Precautions and Instructions  
before operating this  
equipment.

REV 04-196

# LOG SPLITTER



**Safety**  
**Assembly**  
**Operation**  
**Service and Adjustment**  
**Repair Parts**

1602 CORPORATE DRIVE, WARRENSBURG, MISSOURI 64093    PHONE 660-747-8183  
FAX 660-747-8650

**Manufacturing quality lawn care equipment since 1945**

*Made In The*  
**USA**



The operation of any cutter can produce foreign objects to be thrown into the eyes, resulting in severe eye damage. Always wear certified safety glasses or wide-vision safety goggles for over spectacles before starting any cutting machine and while operating such a machine.



**CAUTION!**

Tragic accidents can occur if the operator is not alert to the presence of children. Children are often attracted to the machine and the mowing activity. *Never assume that children will remain where you last saw them*



The operation of any cutter produces sound waves that are damaging to the human ear. Ear protection is recommended.



**CAUTION!**

Chock wheels when parking on a hillside.



Read and follow all Safety Precautions and Instructions before operating this equipment.



Only a qualified mechanic should be used for any adjustments, disassembly or other kind of repairs

## SAFETY PRECAUTIONS



**This Safety Alert Symbol indicates important messages in this manual. When you see this symbol, carefully read the message that follows and be alert to the possibility of personal injury.**

**Read this manual completely. This machine can amputate hands, feet, and throw objects. Failure to observe the following safety instructions could result in serious injury or death**



**WARNING:** The engine exhaust from products contains chemicals known to the state of California to cause cancer, birth defects or other reproductive harm.



**DANGER:** Your log splitter was built to be operated according to the rules for safe operation in this manual. As with any type of power equipment, carelessness or error on the part of the operator can result in serious injury. If you violate any of these rules, you may cause serious injury to yourself or others.

- Read the manual. Learn to operate this equipment in a safe manner.
- Do not under any circumstances alter this log splitter. This equipment was designed and engineered in accordance with operating instructions. Altering this equipment, or using this equipment in such a way as to circumvent its design capabilities and capacities, could result in serious injury or fatality and **WILL VOID THE WARRANTY.**
- Allow only responsible adults who have read this manual to operate this machine. Never allow children to operate this machine.
- Never use splitter for any other purpose than splitting wood. Any other use can result in injury. Your splitter is a precision piece of power equipment, not a toy. Therefore, exercise extreme caution at all times.
- Only a single operator is to load and operate the log splitter. Keep all others, including pets and children, a minimum of 20 feet away from your work area. More accidents occur when more than one person operates the log splitter than any other time.
- Always wear protective gear such as safety goggles, protective hearing device, steel-toed shoes, and tight-fitting gloves without drawstrings or loose cuffs.
- Never wear loose clothing or jewelry that can be caught by moving parts of the splitter and pull you into it. Keep hair away from moving parts.

- Familiarize yourself with all of the controls in a safe environment before starting to work with this machine.
- Fluid escaping from a very small hole can be almost invisible. Do not check for leaks with your hand. Escaping fluid under pressure can have sufficient force to penetrate skin, causing serious personal injury. Leaks can be located by passing a piece of cardboard or wood over the suspected leak and looking for discoloration. **IF injured by escaping fluid, see a doctor at once. Serious infection or reaction can develop if proper medical treatment is not administered immediately.**
- Split only one log at a time. Never attempt to split two logs on top of each other.
- Do not straddle or reach across the splitting area while operating the splitter.
- Do not step over splitter when the engine is running. You may trip or accidentally activate the splitting wedge. Walk around to get to the other side.
- Never place hands or feet between log and splitting wedge or between log and ram during forward or reverse stroke.
- Never attempt to load splitter while splitting wedge is in motion. When loading log splitter, place hands on the sides of the log, not the ends.
- Only use your hands to operate the control lever. Never use foot, knee, rope or any extension device.
- Always keep fingers clear of splits that open in log during splitter operation.
- When splitter is in the return mode, keep hands off the machine.
- Only operate splitter on level ground, not on the side of a hill. It could tip or rolling logs, poor footing, etc. could cause an accident.
- Never operate or allow someone to operate this equipment while under the influence of alcohol or drugs.
- Always block the wheels to prevent movement while using splitter.
- Never operate your splitter on wet, muddy, or icy surfaces. Safe footing is essential in preventing accidents.
-

- Never make adjustments or repairs with the engine running.
- Never attempt to split woods across the grain. Some types of wood may burst or fly out of your splitter and result in injury.
- Both ends of the log should be cut as squarely as possible to prevent the log from riding out of the splitter during operation. Log length should be kept to 24” or less.

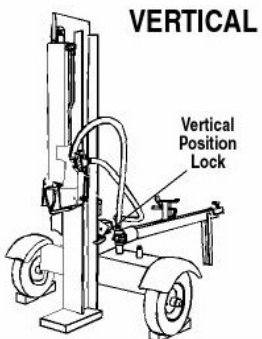
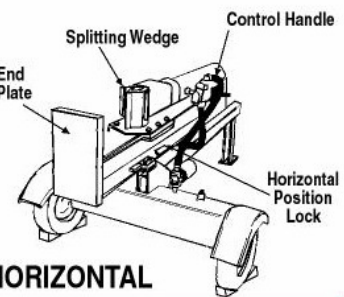
## MOVING SAFETY

- Do not allow persons to ride on splitter. Do not carry any cargo or wood on your splitter.
- Be sure the Kick Stand is up and out of the way before transporting. Retract kickstand by removing pin, rotating up, and replacing the pin
- Never exceed 5 MPH with your splitter. Be cautious when traveling over rough terrain.
- Be aware of the extra width of the splitter while turning, parking, and all driving situations.






## Safety Decals

Replace decals immediately if damaged

### OD08 Operator Instruction Decal

 <p><b>VERTICAL</b></p>	<p><b>OPERATOR'S INSTRUCTIONS</b></p> <ol style="list-style-type: none"> <li>1. Place log splitter on flat, dry, solid ground.</li> <li>2. Lock in either the Horizontal or Vertical position. Block tires to prevent rolling.</li> <li>3. Set the engine throttle at maximum speed.</li> <li>4. Place the log against the end plate.</li> <li>5. Stabilize the log when needed on its side, NEVER on the end, between the log and the splitting wedge.</li> <li>6. Only one adult should stabilize the log and operate the control.</li> <li>7. Move the control handle in the splitting direction.</li> <li>8. Release the control handle to stop the wedge movement.</li> <li>9. Move the control handle opposite the splitting direction to return the wedge.</li> </ol>	<p><b>READ OPERATOR'S MANUAL</b></p>  <p><b>HORIZONTAL</b></p>
--	--	---

### OD21 Danger Decal

 <b>DANGER</b>		
AVOID SERIOUS INJURY OR DEATH	READ OPERATOR'S MANUAL	
	<ul style="list-style-type: none"> <li>• Keep hands away from wedge, end plate, partly split wood and moving parts.</li> <li>• Hold log on its side not on ends.</li> <li>• Only one operator permitted. Adult who loads and holds log must be the one who operates control handle. Keep bystanders, helpers, and children at least 10 feet away.</li> <li>• High pressure fluid can escape through a pin hole leak and cause serious injury by puncturing the skin and causing blood poisoning. Never check for leaks with your hands.</li> <li>• Operate the log splitter on level surface. Lock in vertical or horizontal position.</li> <li>• Wear protective work gloves, safety shoes, and safety goggles. Watch your footing.</li> <li>• Never operate under the influence of alcohol or drugs.</li> <li>• Do not refuel a hot or running engine.</li> </ul>	
		

# OPERATION

**Intended use:** This log splitter is intended and designed to only split wood. NEVER use for any other purposes. Doing so can cause injury or VOID THE WARRANTY.

## ASSEMBLY INSTRUCTIONS

This log splitter has been assembled at the factory. Refer to the drawings and part lists should it become necessary to disassemble the unit for repair or replacement of parts. Inspect all components for damage.

**IMPORTANT:** This unit is shipped without hydraulic oil, after cycling the splitter wedge several times to purge the air, check the oil reservoir and bring to a safe level.



**WARNING:** Exercise extreme caution, as parts are very heavy. Sufficient persons or mechanical handling equipment should be used.

- General Assembly: Remove top, sides and ends of crate. Cut all retaining straps and remove the lag bolt that secures the kickstand to the pallet. Attach splitter to skid steer and lift off of the pallet.
  - Check both the horizontal and vertical positions for any “kinks” in the hoses. Note: Always make sure beam is locked securely into place.
- See **OPERATING POSITIONS** for Horizontal to Vertical Splitting

## START UP

### OPERATION

- Set up the log splitter in a clear, level area.
- Place a log on the beam, against the foot plate. Make sure the log is securely on the foot plate and up against the beam.
- Depress the valve lever so that the cylinder will drive the wedge into the log. Extend the cylinder until the log splits or to the end of its stroke. If the log has not completely split after the cylinder has reached the end of its extension, retract the cylinder. NOTE: Leaving the valve in the “actuate” position at the end of the stroke may damage the pump.

## OPERATING POSITIONS

### Changing Splitting Positions

The Splitter has 2 operating positions: Horizontal to Vertical positioning. With ample height to allow kickstand to clear ground, rotate the splitter assembly to position the pivot tube to a horizontal position. Lift the pin from below the beam to disengage. Rotate beam into the vertical position and engage the pin to lock the beam in place.

CAUTION When rotating the beam from Vertical to horizontal, be sure that the hydraulic hose does not get pinched.

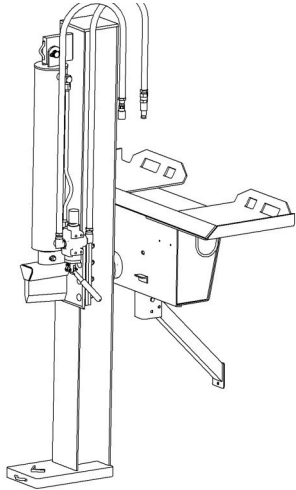


**WARNING: THE LOG SPLITTER BEAM IS HEAVY AND CAN PINCH HANDS/FINGERS ! CARE IS NOT TAKEN.**

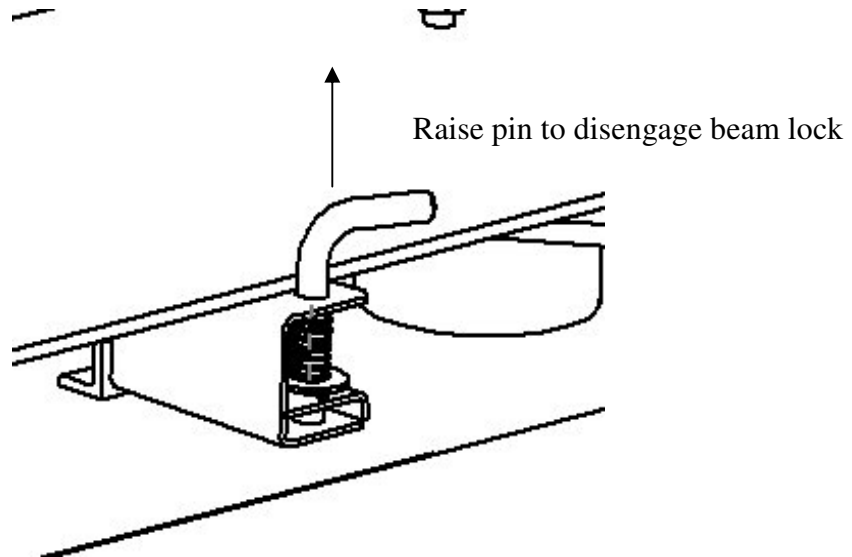
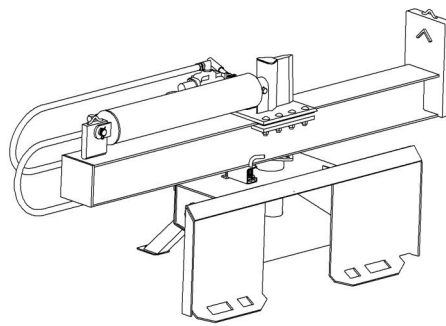
When preparing logs, cut ends as square as possible. The maximum length of any logs should be only 24”.

**READ AND FOLLOW THE SAFETY PRECAUTIONS IN THIS MANUAL.**

Vertical Position



Horizontal Position



## MAINTENANCE & STORAGE

**WARNING:** Disconnect spark plug before performing any maintenance or making adjustments.



### RESERVOIR FLUID

Check the hydraulic fluid level in the reservoir tank before each use. Operating without an adequate oil supply will cause severe damage to the pump. Change the hydraulic fluid in the reservoir Per manufactures recommendations.

**Be aware of the environment when disposing of used petroleum products. Please dispose of used hydraulic fluid, engine oil and any by products from the maintenance of your log splitter at approved recycling centers.**

Should it become necessary to loosen or remove any hydraulic fitting or line, be sure to remove all pressure by shutting off the engine and moving the control handle back and forth several times.



**NEVER remove the cap from the hydraulic tank or reservoir while your unit is running. Hot oil under pressure will cause injury.**

Always store gasoline in an approved, tightly sealed container. Store container in a dry, cool place. Keep fuel away from gas appliances where fumes could contact open flame, pilot lights or sparks.

Do not operate your splitter in poor mechanical condition or when needing repair. Repair and replace worn or broken parts immediately.

Periodically tighten nuts, bolts, and hydraulic fittings.

The hydraulic system of your log splitter requires careful inspection, along with the mechanical parts. Be sure to replace frayed, kinked, or otherwise damaged hydraulic components.

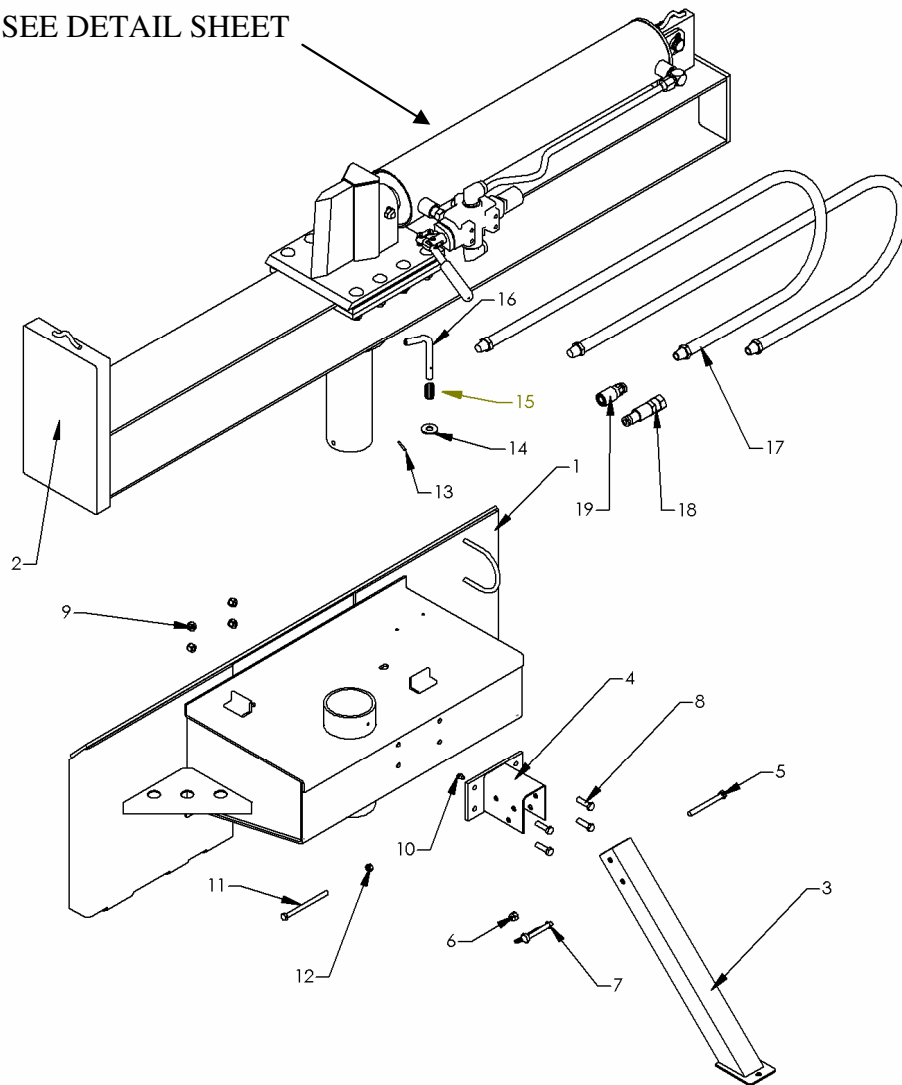
The pressure relief valve on the splitter is preset at the factory. Do not adjust valve. Only a qualified service technician should perform this adjustment.

If the wedge becomes dull or nicked, it can be removed and sharpened. The wedge is heavy and may still have sharp edges, wear gloves while handling the wedge.

### REPAIR PARTS

Your Swisher Log Splitter has been produced with components designed specifically to this machine. Although standard springs, hardware, etc. may look familiar to parts used on other machinery, they may in some cases be made of a different construction and/or materials.

SEE DETAIL SHEET



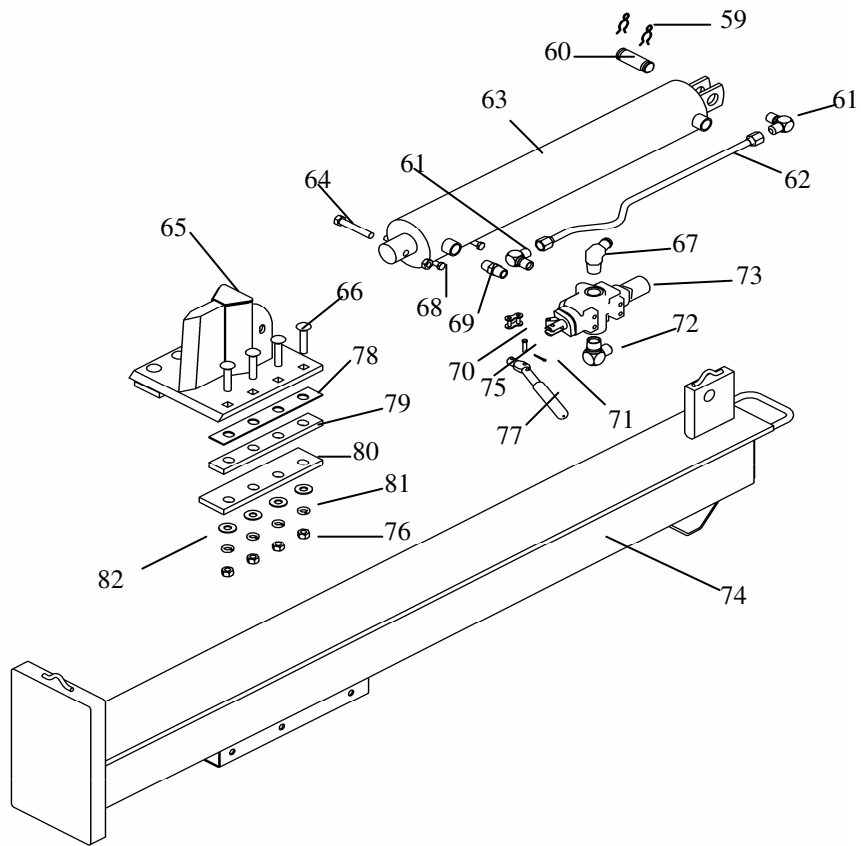
# Assembly Detail

## LS 5-24 Skid Steer Splitter

## SERVICE PARTS

Please have Model and Serial Numbers ready when ordering parts.

ITEM NUMBER	DESCRIPTION	PART NUMBER
1	Mounting Plate	7599TK
2	Beam Weldment	7600C
3	Kick Stand	7386TK
4	Stand Plate Assembly	7603TK
5	3/8 - 16 X 3 Grade 5 Bolt	NB164
6	3/8-16 Nylock Nut	NB182
7	Safety Hitch Pin	H-10
8	3/8 - 16 X 1 1/4 Grade 5 Bolt	NB618
9	3/8-16 Nylock Nut	NB182
10	Grease Fitting	NB704
11	5/16-18 X 4 1/2 Grade 5 Bolt	NB513
12	5/16-18 Lock Nut	NB558
13	1/8 X 1 1/4 Roll Pin	NB187
14	1/2 "lat Washer	NB555
15	Spring - Compression	7429
16	Lock Pin	7595TK
17	Hydraulic Pressure Hose	7613
18	Flat Face Coupling Male	7609
19	Flat Face Coupling Female	7610
20	Hose Sleeve ( Not Shown)	7611
21	Sleeve Clamps ( Not Shown )	NB656
22	3/8 Washer	NB271



## BEAM DETAIL

ITEM NUMBER	DESCRIPTION	PART NUMBER
59	CLIP PIN	NB642
60	STEEL PIN	7293
61	HYDRAULIC FITTING	7291
62	STATIONARY LINE ASSEMBLY	7288TK
63	RAM CYLINDER	7355TK
64	1/2-13 X 3 GR5 BOLT	NB131
65	SPLITTING WEDGE	7233TK
66	1/2-13 X 2 1/2 GR5 CARRIAGE BOLT	NB643
67	RETURN LINE FITTING	7617
68	1/2-13 JAM 2-WAY LOCK NUT	NB121
69	2-WAY PIPE NIPPLE	7292
70	MASTER CHAIN LINK	7424
71	COTTER PIN	NB597
72	VALVE INLET FITTING	7617
73	VALVE CONTROL W/ LEVER	7287TK
74	BEAM WELDMENT	7600C
75	1/4 X 1 CLEVIS PIN	NB522
76	1/2-13 NUT	NB213Z
77	VALVE LEVER & GRIP	7423/7425
78	THIN GIB PLATE	7388TK
79	THICK GIB PLATE	7237TK
80	BOTTOM GIB PLATE	7333TK



## **OWNER'S MANUAL**

**MODEL NO.**

**LS5-24**

# **LOG SPLITTER**

## **HOW TO ORDER REPAIR PARTS:**

Each Log Splitter has its own serial number. Each engine has its own serial number. The serial number for the Log Splitter will be found on the right hand side of the hydraulic oil reservoir. The serial number for the engine will be found on the top of the blower fan housing.

All Log Splitter parts listed herein may be ordered directly from Swisher Mower & Machine Co. Inc., your nearest Swisher dealer, or from our website.

All engine parts may be ordered from the nearest dealer of the engine supplied with your mower. Parts subject to change without notice.

WHEN ORDERING PARTS, PLEASE HAVE THE FOLLOWING INFORMATION AVAILABLE:

- \* PRODUCT – SWISHER LOG SPLITTER
- \* SERIAL NUMBER - \_\_\_\_\_
- \* MODEL NUMBER - \_\_\_\_\_
- \* ENGINE MODEL NUMBER - \_\_\_\_\_  
TYPE - \_\_\_\_\_
- \* PART NUMBER
- \* PART DESCRIPTION

www.swisherinc.com  
TELEPHONE - 1-800-222-8183  
FAX - 1-660-747-8650

**SWISHER MOWER & MACHINE CO. INC.**  
1602 CORPORATE DRIVE  
WARRENSBURG, MO 64093

**SWISHER MOWER & MACHINE CO. INC.**