

**SWISHER**

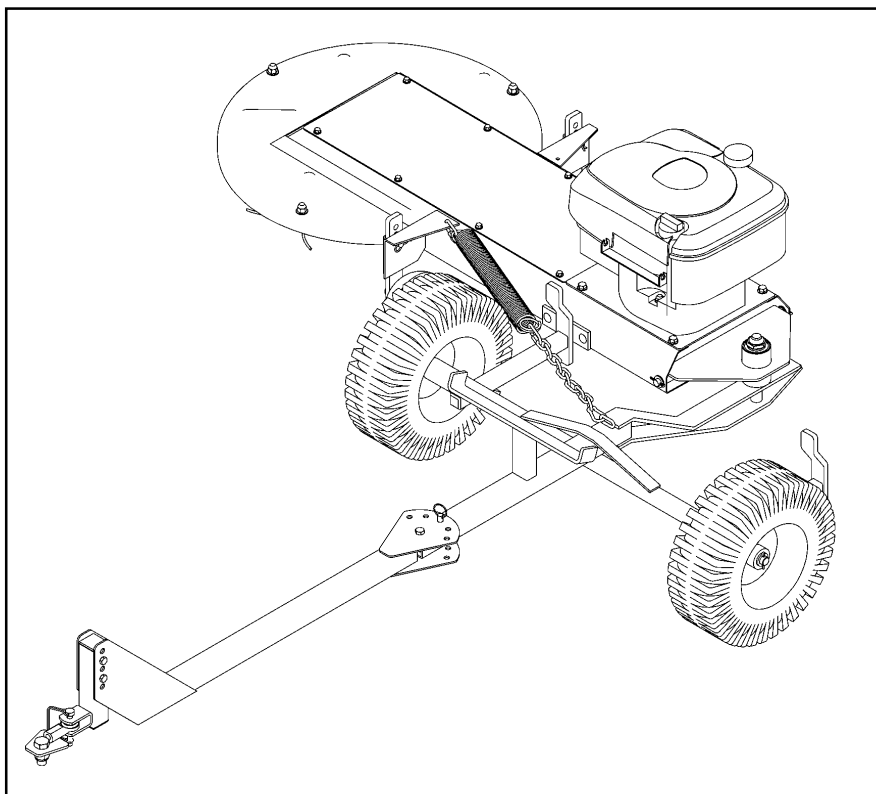
**OWNER'S  
MANUAL**

**MODEL NO.  
PST50022**



**IMPORTANT**  
Read and follow all  
Safety Precautions  
and Instructions  
before operating this  
equipment.

Rev.02.9.2001



**POSTMASTER  
TOW MOWER & FENCE POST TRIMMER**

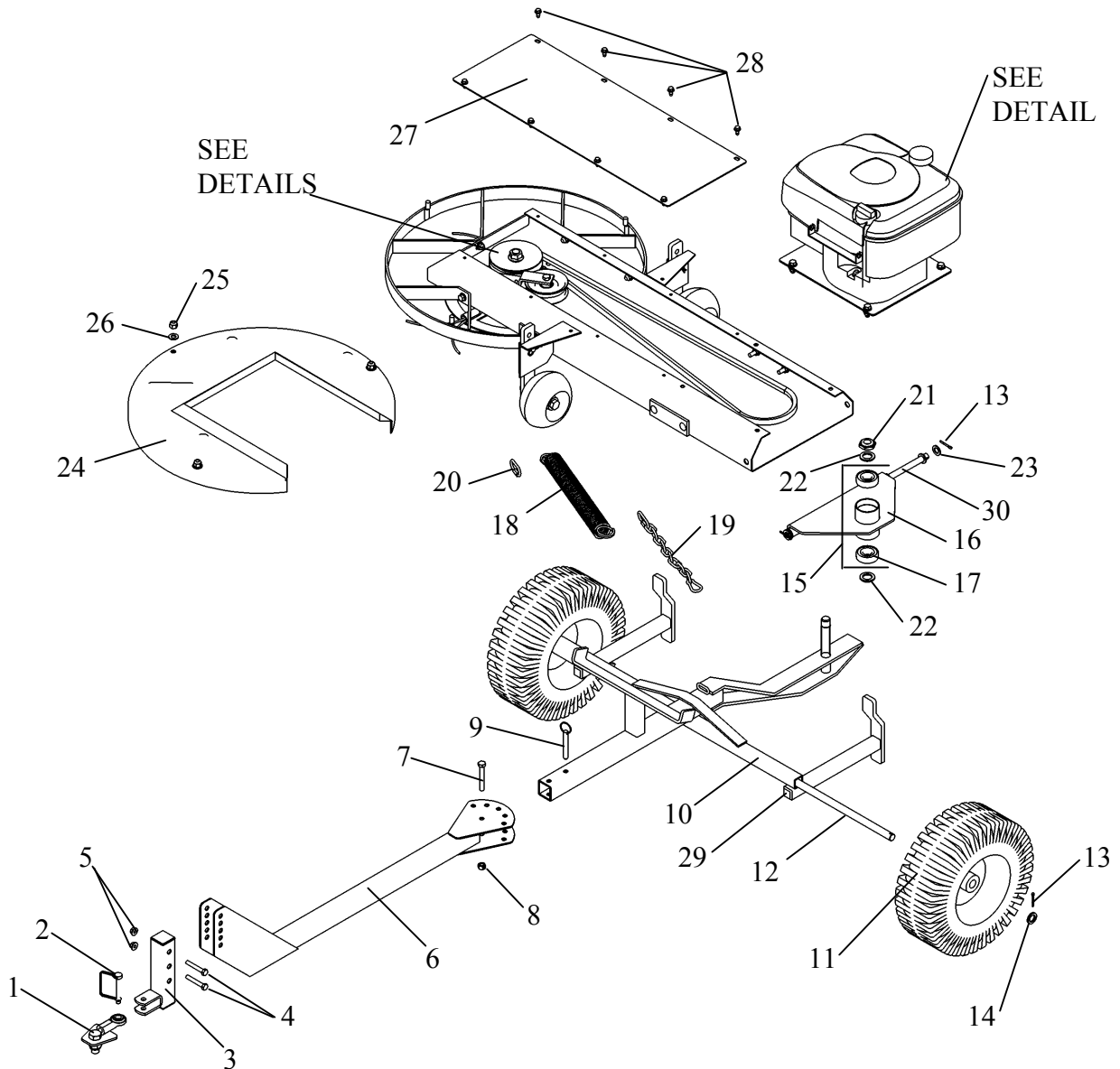
**Assembly  
Operation  
Service and Adjustment  
Repair Parts**

**SWISHER**

1602 CORPORATE DRIVE, P.O. BOX 67, WARRENSBURG, MISSOURI 64093  
PHONE 660-747-8183 FAX 660-747-8650

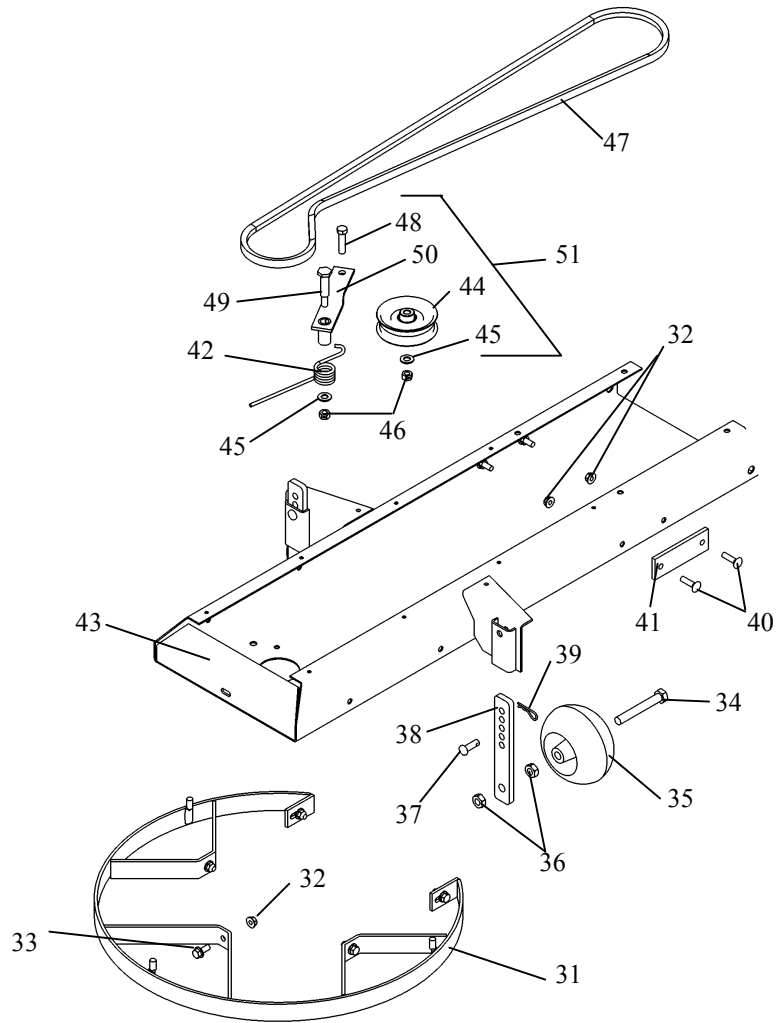
**Manufacturing quality lawn care equipment since 1945**

*Made In The*  
**USA**



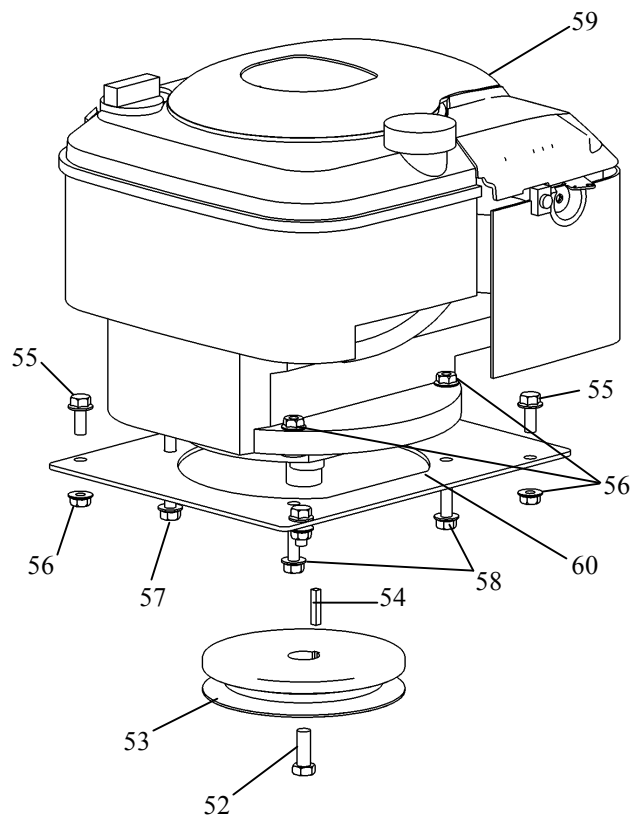
## POSTMASTER ASSEMBLY

ITEM NUMBER	DESCRIPTION	PART NUMBER	ITEM NUMBER	DESCRIPTION	PART NUMBER
1	Swivel Hitch	H10	16	Pivot Weldment	3530
2	Hitch Pin	H11	17	Bearing	B98
3	L Hitch	H1	18	Return Spring	3508
4	5/16-18 X 2 Gr.5 Bolt	NB507	19	Safety Chain	4567
5	5/16-18 Serr. Flange Nut	NB170	20	3/16 Chain Connector	ES077
6	Hitch	3549	21	3/4-16 Jam Nylok Nut	NB122
7	3/8-16 x 2 1/2 Gr.5 Bolt	NB221	22	13/16 X 1 1/4 x 1/8 Washer	NB195
8	3/8-16 2-Way Lock Nut	NB280	23	1/2 x 14 Ga. Machine Bushing	NB177
9	3/8 x 2 1/2 Ball Lock Pin	NB520	24	Plastic String Guard	3526
10	Frame Weldment	3551	25	3/8-16 Nylok Nut	NB182
11	Tire/Wheel/Bearing	F4157W	26	3/8 SAE Washer	NB272
12	Axle	3536	27	Belt Cover	3501
13	1/8 x 1 Cotter Pin	NB126	28	1/4-20 x 1/2 Tapping Bolt	NB114
14	5/8 ID X 1 OD 10 Ga. Washer	NB178	29	1" Square Plug	671P
15	Pivot Assembly	3557	30	Pivot Bar	3504

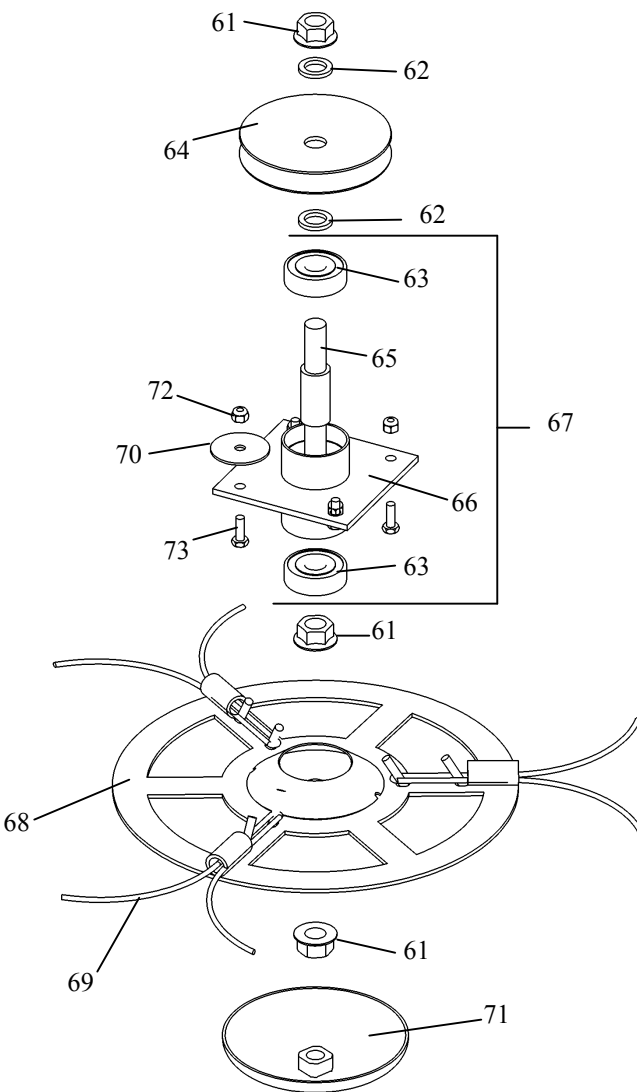


## DECK ASSEMBLY

ITEM NUMBER	DESCRIPTION	PART NUMBER
31	Front Guard	3532
32	5/16-18 Serr. Flange Nut	NB170
33	5/16-18 x 3/4 Serr. Flange Bolt	NB596
34	1/2-13 x 3 1/2 Gr.5 Bolt	NB577
35	Roller Wheel	3511
36	1/2-13 Jam 2-Way Lock Nut	NB121
37	3/8 x 1 1/8 Clevis Pin	NB300
38	Height Adjust Bar	3515
39	#3 Hair Pin	NB127
40	5/16-18 x 1 Carriage Bolt	NB516
41	Wear Strip	3519
42	Torsion Brake Spring	9040
43	Motor Base Weldment	3548
44	Idler Pulley OD-3.25", ID-3/8"	B527
45	3/8 SAE Washer	NB272
46	3/8-16 2-Way Lock Nut	NB280
47	Belt 74"	4220
48	3/8-16 x 1 1/2 Gr.5 Bolt	NB107
49	1/2 X 1-9/16 Shoulder Bolt	NB220
50	Idler Weldment	3533
51	Idler Sub-Assembly	3554



### ENGINE SET-UP



### SPINDLE ASSEMBLY

ITEM NUMBER	DESCRIPTION	PART NUMBER
52	3/8-24 x 1Gr.5 Bolt	NB238N
53	Engine Pulley- 6"	2050
54	3/16 x 1 Key Stock	9030
55	5/16-18 x 3/4 Serr. Flange Bolt	NB596
56	5/16-18 Serr. Flange Nut	NB170
57	5/16-18 x 2 1/4 Serr. Flange Bolt	NB622
58	5/16-18 x 1 1/4 Serr. Flange Bolt	NB253
59	5 HP Briggs & Stratton	Not Available
60	Motor Base	3506
61	5/8-11 Serr. Flange Nut	NB598
62	5/8 ID x 1 OD 10 Ga. Washer	NB178
63	Bearing	B985/8
64	Blade Pulley- 4.5"	2049
65	Blade Shaft	3547
66	Bearing Housing	B99EC
67	Spindle Sub-Assembly	3555
68	Spinner Disk Weldment	3553
69	36 Pack 18" Trimmer Line	P3618
70	5/16 ID x 1 3/4 OD x 14 Ga. Washer	NB641
71	Spinner Bumper	3556
72	1/4-20 Nylok Nut	NB180
73	1/4-20 x 3/4 Gr.5 Bolt	NB250



## OWNER'S MANUAL

**MODEL NO.  
PST50022**

# POSTMASTER

Each trimmer has its own model number. Each engine has its own model number. The model number for the trimmer will be found on the right hand side of the drive belt housing. The model number for the engine will be found on the top of the blower fan housing.

All trimmer parts listed herein may be ordered directly from Swisher Mower & Machine Co. Inc. or your nearest Swisher dealer.

All engine parts may be ordered from the nearest dealer of the engine supplied with your mower.

WHEN ORDERING PARTS, PLEASE HAVE THE FOLLOWING INFORMATION AVAILABLE:

- \* PRODUCT - POSTMASTER
- \* SERIAL NUMBER - \_\_\_\_\_
- \* MODEL NUMBER - \_\_\_\_\_
- \* ENGINE MODEL NUMBER - \_\_\_\_\_
- TYPE - \_\_\_\_\_
- \* PART NUMBER WITH PAINT CODE
- \* PART DESCRIPTION

TELEPHONE - 1-800-222-8183

FAX - 1-660-747-8650

**SWISHER MOWER & MACHINE CO. INC.**

1602 CORPORATE DRIVE

P.O. BOX 67

WARRENSBURG, MO 64093



**SWISHER MOWER & MACHINE CO. INC.**