

# OWNER'S MANUAL

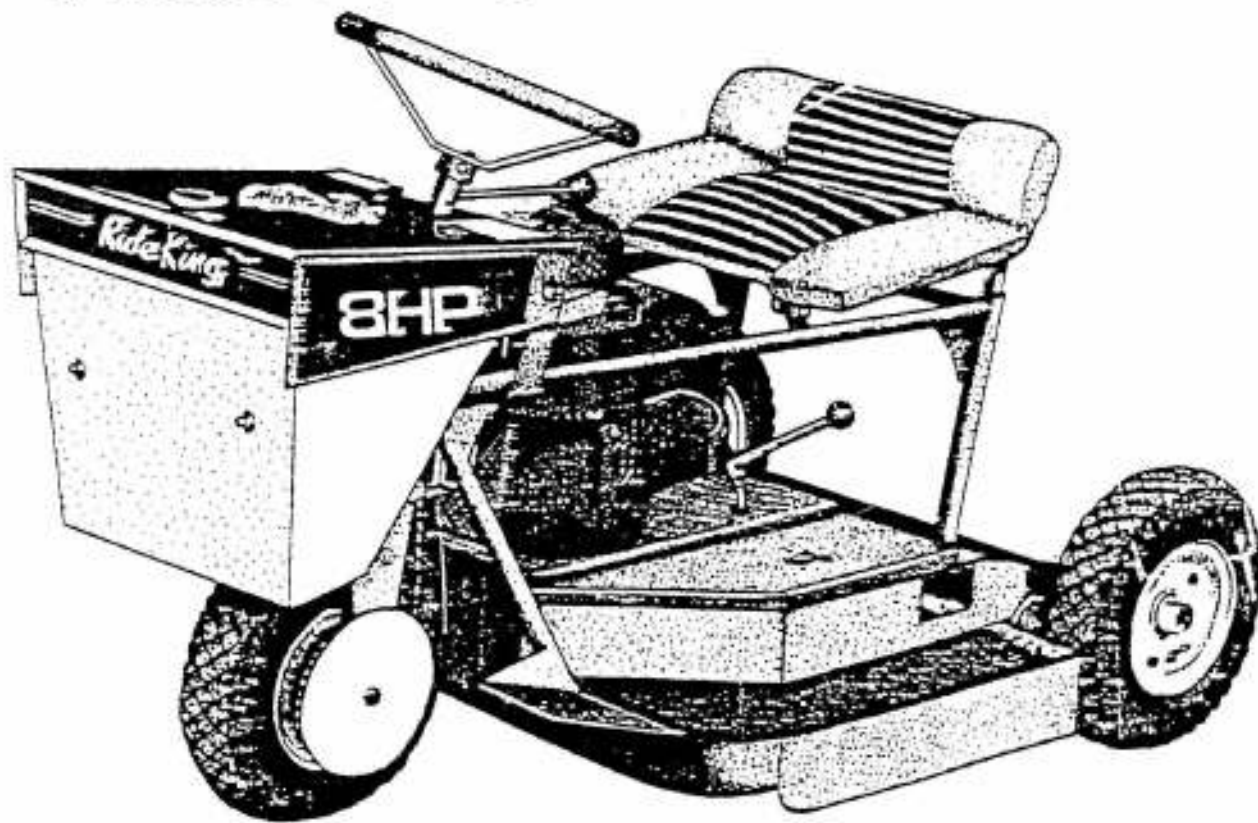
for

# SWISH-ERR

## RIDING MOWERS

Including: Side-Discharge Models  
Quick-Change Mulching Models  
Built-In Sweeper Models

*Ride King* and **Big Mow**



CONGRATULATIONS ON YOUR NEW SWISHER MOWER

We suggest you keep a copy of the receipt, cancelled check or payment to verify your mower purchase

# IMPORTANT

1. Know the controls and how to stop quickly. READ THIS OPERATOR'S MANUAL and instructions furnished with attachments.
2. Do not allow children to operate the machine. Do not allow adults to operate without proper instruction.
3. Do not carry passengers. Do not mow when children and others are around.
4. Clear the work area of objects (wires, rocks, etc.) that might be picked up and thrown.
5. Disengage all attachment clutches and shift into neutral before attempting to start the motor.
6. Disengage power to attachments and stop the motor before leaving the operator's position.
7. Disengage power to attachments and stop the motor before making any repairs or adjustments.
8. Disengage power to attachments, when transporting or not in use.
9. Take all possible precautions when leaving the vehicle unattended, such as disengaging the power-take-off, lowering the attachments, setting the parking brake, stopping the engine, and removing the key.
10. Do not stop or start suddenly when going uphill or downhill. Mow up and down the face of steep slopes; never across the face.
11. Reduce speed and exercise extreme caution on slopes and in sharp turns to prevent tipping or loss of control. Be especially cautious when changing direction on slopes.
12. Stay alert for holes, rocks, and roots in the terrain and other hidden hazards. Keep away from drop-offs.
13. Use care when pulling loads or using heavy equipment.
  - a. Use only approved drawbar hitch points.
  - b. Limit loads to those you can safely control.
  - c. Do not turn sharply. Use care when backing.
  - d. Use counterweights or wheel weights when suggested in this operator's manual.
14. Watch out for traffic when crossing or near roadways.
15. When using any attachments, never direct discharge of material toward bystanders nor allow anyone near the vehicle while in operation.
16. Handle gasoline with care—it is highly flammable.
  - a. Use approved gasoline container.
  - b. Never remove the fuel cap of, or add gasoline to, a running or hot engine or an engine that has not been allowed to cool for several minutes after running. Never fill the tank indoors and always clean up spilled gasoline.
  - c. Open doors if the engine is run in the garage - exhaust fumes are dangerous. Do not run the engine indoors.
17. Keep the vehicle and attachments in good operating condition, and keep safety devices in place and in working condition.
18. Keep all nuts, bolts and screws tight to be sure the equipment is in safe working condition.
19. Never store the equipment with gasoline in the tank inside a building where fumes may reach an open flame or spark. Allow the engine to cool before storing in any enclosure.
20. To reduce fire hazard, keep the engine free of grass, leaves, or excessive grease.
21. The vehicle and attachments should be stopped and inspected for damage after striking a foreign object, and the damage should be repaired before restarting and operating the equipment.
22. Do not change the engine governor settings or over speed the engine.
23. When using the vehicle with mower, proceed as follows:
  - a. Mow only in daylight or in good artificial light.
  - b. Never make a cutting height adjustment while the engine is running if the operator must dismount do so.
  - c. Shut the engine off when removing the grass catcher or unclogging chute.
  - d. Check the blade mounting bolts for proper tightness at frequent intervals.
24. Under normal usage, the grass catcher bag material is subject to deterioration and wear. Check bag frequently for deterioration and wear and replace worn bags. Check that replacement bags comply with the original manufacturer's recommendations or specifications.
25. Disengage power to mower before backing up. Do not mow in reverse unless absolutely necessary and then only after observation of the entire area behind the mower.

\* ALWAYS BE CAREFUL WHILE OPERATING THIS MACHINE.

\* THINK ABOUT SAFE OPERATION OF THIS UNIT AT ALL TIMES DURING ITS USE.



\* WHEN YOU SEE THIS SYMBOL ON YOUR MACHINE BE ALERT TO THE POSSIBILITY OF PERSONAL INJURY OR DEATH.

\* IT IS THE OWNER'S AND EACH OPERATOR'S RESPONSIBILITY TO READ AND BE FAMILIAR WITH THIS MANUAL.

## LIMITED WARRANTY

The manufacturer warrants to the original consumer purchaser that this product, as manufactured is free from defects in materials and workmanship. For a period of one (1) year from date of purchase by the original consumer purchaser, we will repair or replace, at our option, without charge for labor incurred in replacing parts, any part which we find to be defective due to materials or workmanship. This warranty is subject to the following limitations and exclusions.

1. Engine warranty. All engines on our products have a separate warranty extended by the individual engine manufacturer. Said warranty must be referred to in the event of a service requirement. For Briggs & Stratton Engine service and warranty information call 1-800-233-3723. For Tecumseh Engine service and warranty information call 1-414-377-2700.
2. The warranty period for any product used for rental or commercial purposes is limited for ninety (90) days from the date of original purchase.
3. This warranty applies only to products which have been properly assembled, adjusted and operated in accordance with instructions found in the product literature. This warranty does not apply to any product which has been subject to alterations, misuse, abuse, improper assembly or installation, delivery damage, or to normal wear of the product.
4. Exclusions. Excluded from this warranty are normal wear, normal adjustments and normal maintenance.
5. All transportation charges on, and damages and loss incurred in connection with, the transportation of parts submitted for replacement or repair under this warranty shall be borne by the purchaser. If you have any questions concerning this warranty, please contact:

Swisher Mower & Machine Co. Inc.  
P.O. Box 67  
Warrensburg, MO 64093  
816-747-8183

Please have the model number and serial number of your mower, the date of purchase and the name and address of the dealer from whom it was purchased ready when you call.

**THIS WARRANTY DOES NOT APPLY TO INCIDENTAL OR CONSEQUENTIAL DAMAGES. ANY IMPLIED WARRANTIES ARE LIMITED TO THE SAME TIME PERIODS STATED HEREIN FOR OUR EXPRESSED WARRANTIES.** Some areas do not allow the limitation of consequential damages or limitations of how long an implied warranty may last, so the above limitations or exclusions may not apply to you. This warranty gives you specific legal rights and you may have other rights which vary from state to state.

This is a limited warranty within the meaning of that term as defined in the Magnuson-Moss Act of 1975.

**IMPORTANT!**  
**READ THIS MANUAL BEFORE OPERATING MOWER**

## ASSEMBLY

To assemble your new mower, complete ALL of the following steps.

1. Bolt your steering wheel onto the Steering Wheel Hub (Part #T2H) using the 4 enclosed Cap Screws (Part #A120B).
2. Next, attach the two rear wheels by using the 2 Cotter Pins (Part #T218C). Slide the wheel and tire assembly onto the Axle Shaft (Part #A156) with the heads of the bolts and the air valve facing away from mower, onto the Axle Shaft (Part #A156). Slide the Pin through the hole in the Axle on the outside of the Wheel Assembly. IMPORTANT - Use pliers to bend the straight ends of the Cotter Pins to keep Wheel Assembly in place.
3. **IMPORTANT - Add engine oil according to engine manual. DO NOT RUN MOWER UNTIL ENGINE OIL HAS BEEN ADDED. DO NOT OVERFILL.**
4. Add approximately 1 gallon of fuel to gas tank.
5. Although Gearbox Lube is usually added at factory, verify lube level in Gearbox. Use the Oil Check Plug (#T143P) located on the front side of the Gear Box. The oil should be level with the Oil Check Plug. If you need to add lube use ONLY TR124L that is specially mixed by Swisher Mower & Machine Co., Inc.

## OPERATING HINTS

1. Always wear substantial footwear and avoid loose fitting clothing that could get caught in moving parts.
2. Always wear safety glasses or eye shields before starting mower and while mowing. We recommend a Wide Vision Safety Mask for use over glasses or standard safety goggles.
3. Prolonged exposure to loud noise can cause impairment or loss of hearing. Wear a suitable hearing protective device such as earmuffs or earplugs to protect against loud noises.
4. Learn how to properly operate and maintain mower. Incorrect operation or service could cause personal injury or damage to equipment.
5. Know location and function of all controls and how to stop mower quickly.
6. Mow only during daylight.
7. Never mow in wet or slippery grass where traction is unsure or at an uncontrollable speed.
8. Mow a safe distance from creeks, ditches, ledges and roads. Use extreme caution when crossing roads.
9. Before mowing, remove any objects (sticks, stones, wire, rocks, bones, ect.) from yard that may be thrown by the mower's blades. Never deliberately run into or over any objects.
10. Do not attempt to operate mower when not in the driver's seat.
11. Always get on and off mower from operator's left-hand side.
12. Never carry children or passengers. Do not mow when children, others or pets are in the area.
13. Do not allow children to operate mower. Adults should have proper instruction before using mower.
14. Before each mowing, check for adequate fuel and oil levels.
15. Disengage drive and blades before attempting to start engine.
16. Keep eyes and attention on mower and the area you are cutting. Stay alert for holes in the terrain and other obstructed hazards.
17. ALWAYS make sure discharge chute is directed away from bystanders.
18. NEVER place hands or feet under mower, in discharge chute or near any moving part while mower is running. If blades or chute need to be cleaned or cleared, ALWAYS stop engine, disconnect Spark Plug Wire and make sure blades have stopped completely first.
19. If mower strikes a foreign object, stop the engine and inspect the mower for damage. Repair the damage before restarting the equipment.
20. DO NOT mow in reverse unless absolutely necessary, and then, only after carefully clearing the entire area behind the mower.
21. Take all possible precautions when leaving mower unattended. Stop engine and always remove the key.

## BECOMING FAMILIAR WITH YOUR NEW SWISHER MOWER

Select an open unobstructed area in which to complete the following steps. Familiarize yourself with the location and movement of the mower controls before starting the engine.

RIGHT AND LEFT SIDES OF MOWER ARE DETERMINED BY SITTING IN THE DRIVERS SEAT.



**1. ENGAGING THE DRIVE:** If your mower is hand-operated, the motion of the mower is controlled by the Drive Clutch Lever (AT125) located just below the steering wheel. To put the mower in motion, push the lever forward. To disengage the drive, pull the lever back.

If your mower is foot-pedal operated, the drive and speed are controlled as they are in a car. To engage the drive, press your foot against the pedal. The speed of the mower is regulated by the amount of pressure against the foot pedal. By lifting foot completely from the pedal, the mower automatically stops and brakes.

The front Wheel Drive Pin (TR148P) must be engaged to operate the mower's transmission. Do not engage pin when engine is running. The Lock Pin Lever (TR148L) located opposite the chain on the front wheel is engaged when it is resting flat against the front wheel. Slowly roll mower until the front wheel "locks" into place. The TR148L should always be engaged (flat against the wheel) before starting the engine. However, to move mower when engine is not running, the TR148L must be disengaged.

**2. CONTROLLING THE SPEED:** If mower is equipped with two-speed drive (the lever with 2 knobs located on the right side just below the steering wheel), you can change mowing speeds (once the Drive Control Lever is forward) without clutching. Use low speed (by turning the knob to the right) for trimming and maneuvering in tight places. The high speed (knobs are turned to the left) is used primarily for mowing large open areas. To change gears smoothly, turn the 2-speed lever with a quick motion. Speed can also be regulated by raising or lowering the engine throttle mechanism.

If mower is one-speed, regulate speed by raising or lowering the engine throttle mechanism.

If mower is equipped with a Foot Control Pedal, speed is regulated by the amount of pressure against the foot pedal. To stop mower, lift foot completely from the pedal.

**3. ENGAGING THE BLADES:** The Blade Clutch (BR20) is located on the left side below the seat. To engage the blades, move the lever toward the front of the mower. To disengage the blades, pull the lever toward the rear of the mower.

**4. THE ZERO-TURNING RADIUS:** The Swisher's patented front wheel drive steering mechanism provides 360 degrees of maneuverability. Reverse by simply turning the front wheel in the direction you want to go - no shifting gears. Trimming around trees, shrubs and yard ornaments is quick and easy.

To reverse in tight areas (where you may find most four-wheel mowers difficult or impossible to maneuver), pull back the Drive Control Lever (AT125) to stop the mower, turn the steering wheel 180 degrees (in the opposite direction) and engage the Drive Lever once again.

**5. If mower is a Quick-Change Mulching Mower, ALWAYS remember to STOP engine and disconnect Spark Plug Wire before adjusting chute. To use as a side-discharge mower, twist knob to unlock chute, let chute open and then twist knob to lock chute. To use as a mulching mower, twist knob, close chute and twist knob again to lock.**

6. Before starting engine for the first time, check fuel and oil levels. Make sure the Drive Control and Blade Clutch Levers are pulled back and disengaged or foot is off the pedal. Once engine is started, become familiar with the steering and maneuvering of the mower before engaging the blades.

## MOWING HINTS

**GENERAL:** Do not mow your lawn too short. This practice weakens turf and increases its susceptibility to weeds, pest damage and injury. Keep your blades sharp to cut fine clippings that will decompose quickly. Mow your lawn when it is dry to eliminate clumping. Do not allow leaves to accumulate on the law. The weight and shade will suffocate and deprive the grass.

**MOWING ON A SLOPE:** As with all machinery, exercise caution particularly when operating on a slope. NEVER OPERATE MOWER ON A SLOPE OF 15 DEGREES OR GREATER OR WHERE IT MAY TIP.

Mow up and down the slope, never across the slope. Use "low" gear when mowing slopes. Make turns gradually to prevent tipping or losing control. Avoid stopping or starting suddenly. If mower stops while going uphill, disengage the blades by pulling the Blade Lever back, adjust to low speed, look behind you and slowly back down incline.

**MOWING TALL OR THICK GRASS:** Mow in a counter-clockwise direction, throwing clippings onto the already cut grass. Throwing clippings onto uncut areas increases the density of the grass even more and often causes clippings to "clump". If grass is extremely long, use "low" gear and a high throttle setting. Another hint is to cut no more than half of your normal cutting width.

If the mower becomes clogged, simply stop the drive of the mower, keeping the engine running and the blades engaged. This often clears the clog. (NEVER attempt to remove the grass or other material from beneath the mower deck in any other way while the engine is running.)

**NORMAL MOWING, SHORT OR THIN GRASS:** Mow in a clockwise direction throwing the clippings onto the uncut grass. The grass blades will be repeatedly cut, leaving only fine clippings to filter down to the soil.

## MOWER MAINTENANCE

Make sure your mower is in safe working condition by keeping the following guidelines in mind every time you use your mower.

1. Keep mower in good operating condition and keep safety guards, shields and switches in place. DO NOT operate mower if any of these devices are missing.
2. Often check all nuts, bolts and screws for secure fit to keep equipment in safe working condition. Adjust if necessary.
3. Keep engine free of grass, leaves or excessive grease to reduce fire hazard.
4. DO NOT operate mower with a damaged or missing muffler or tamper with exhaust system as this may create a fire hazard.
5. DO NOT operate engine if air cleaner or the cover directly over the carburetor air intake is removed. Removal of these parts could create a fire hazard.
6. Before cleaning, making adjustments or repairing mower, stop engine and disconnect the spark plug wire. Allow engine to cool.
7. To ensure the most even cut, keep tire pressure at 30 psi (pounds per square inch).
8. Handle gasoline with care. DO NOT smoke or use open flame near gasoline. Use only approved gasoline containers. Never fuel or run mower in a poorly ventilated area, such as a garage or utility building. Never add gasoline to a hot engine — allow engine to cool for a few minutes. Always replace fuel tank cap. Clean up any spilled gasoline.

9. Do not change the engine governor settings or overspeed the engine; severe damage or injury may result.
10. Never store mower, with gasoline in the tank, inside a building where fumes may reach an open flame or spark. Always allow engine to cool before storing.
11. **PREPARATION FOR STORING YOUR MOWER:** Preparing your mower for storage will encourage better operation and a longer life. Doing so in the fall allows plenty of time to reorder parts, make the needed repairs and check for proper operation before the equipment is needed again in the spring.

Begin by disconnecting the Spark Plug Wire. It is advisable to drain the fuel. Then drain the oil. Refill the crankcase with clean oil for storage. Next, clean the equipment. Brush off matted clippings and caked-on mud. Use a wire brush to clean the underside of lawn mower. Use a cloth to wipe away debris from the upper deck. If available, use compressed air to blow thatch and dirt from hard to reach places.

Tighten all nuts, bolts and screws. Replace any that are missing. Sharpen blades, or if the blades are worn, replace with new ones. Check the tires for cuts and proper air pressure. Replace if needed. Store mower indoor in a garage, tool shed or barn. If you must store it outdoors, cover it with plastic or some other protective covering. Consult your engine manual for recommended winter storage preparations.

## ADJUSTMENTS AND ROUTINE SERVICING

**WARNING: ALWAYS STOP ENGINE AND DISCONNECT SPARK PLUG WIRE BEFORE MAKING ADJUSTMENTS OR SERVICING MOWER!**

**CUTTING HEIGHT ADJUSTMENT/BLADE SHARPENING:** Tilt mower on its left side so carburetor remains on the high side. To adjust the cutting height, remove Blade Nut (B108) and Blade Nut Lock Washer (B108L) from Blade Shaft (B100). Remove Blades (B32S and B32L) and the appropriate Blade Spacers (B101, B102 and/or B103) depending on how high or low you need to adjust the Blades. Sharpen the Blades if needed. When reassembling, replace the old Blade Nut Lock Washer (B108L) with a new one. Use pliers to bend the sides of the Washer around the Blade Nut to secure.

**LUBRICATION: Wheel Bearings** - Lubricate the Rear Wheel Bearings two or three times year by putting a few drops of regular car engine oil on each Wheel Bearing (F157B and F4157B). **Blade Bearings** - These bearings are sealed and do NOT require additional lubrication. **The Gear Box** - Located on the drive unit. After every twenty hours of operation check the oil level by using the Oil Check Plug (T143P) located on the front side of the Gear Box. For the Swisher widetrac drive assembly, the oil check plug (T143P) is located on the side of the gear box opposite the drive shaft and sprocket. Oil should be level with the Oil Check Plug. Use only the special gear oil (TR124L) prepared by Swisher Mower & Machine Company. **Seat Spring Rods (A135)** - Once a year lubricate with common grease or petroleum jelly. **Engine** - Refer to your engine manual for engine lubrication care.

**Belts:** Occasionally check Belts for wear. A worn belt should be replaced. See **REPAIR** sections for instructions. **Cleaning your mower:** After each use, dirt and debris should be removed from the mower's surface. Use a broom or towel to brush the unit off. Periodically, grass accumulation can be cleaned from underneath the mower deck. This is done by scraping the underneath side of the deck with a flat garden tool or other household scraping device to remove grass build up. This process is optional and will not necessarily create any measurable performance difference. The frequency of this process will vary depending on the mowing conditions and frequency of usage of the mower.

**WARNING-ALWAYS STOP ENGINE AND DISCONNECT SPARK PLUG BEFORE ATTEMPTING TO CLEAN THE DECK.**

Access to underneath the deck can be made by the reaching cleaning tool underneath the mower while the mower is in the upright position or by tipping the mower on it's left side (carburetor up) and bracing the mower to ensure it's stability.

See engine manual for air filter cleaning and replacement.

## REPAIRS

**WARNING-ALWAYS STOP ENGINE AND DISCONNECT SPARK PLUG WIRE BEFORE MAKING REPAIRS ON MOWER! ALWAYS USE GENUINE SWISHER REPLACEMENT PARTS.**

**REPLACING THE BLADE BELT:** Remove left and right mower deck inspection plates from mower by removing the Hair Pin Latches (A155H) found on the upper deck platforms. Release tension on the belt by moving the Idler Control Lever (BR20) toward the rear of the mower. Then carefully remove Blade Belt (BA50) from engine and Blade Drive Pulleys, observing the belt path and position.

Install new Blade Belt in same position. (You may find the belt path illustration in this manual helpful when inserting the new belt.) Hint - It is normal for the new belt to fit tighter than the worn belt. Therefore, to make installation easier, always install the new belt over the Blade Pulleys before installing it over the movable Idler Pulley/B427.

Once installed, the Blade Belt should not slip on pulleys when the Idler Control Rod is engaged and the mower blades should not turn when Idler Control Rod is disengaged. If the Belt slips or blades turn, first verify that you are using a genuine Swisher Blade Belt (BA50). Next check belt for correct positioning around pulleys. If the Belt is still not fitting properly, the Idler Control Rod (B25R) may need to be adjusted. To loosen belt, slightly unscrew the two nuts located on the end of the Idler Control Rod that secure the Idler Control Lever (BR20). To tighten belt, tighten the two nuts so that they screw toward the mower.

Reinstall inspection plates and Hair Pin Latches after completing installation and adjustments.

### TRACTION DRIVE BELT:

**Single Speed Models-** The Control Lever with knob (located just under steering wheel) engages and disengages the Drive Belt (T36) of the single speed mower. This in turn controls the Idler Pulley (T30V). Moving the control lever forward will engage the Drive Belt. Pulling the lever rearward will disengage the Drive Belt. The Idler Pulley should press snugly against the Drive Belt when Control Lever (BR20) is pushed toward the front of the mower. If the Drive Belt slips when engaged see **Slipping Drive Belt** section below.

**Dual-Speed Models -** Turning the 2 Speed Shift Lever (the lever with the two knobs located just under the steering wheel) to the right will engage the Low Speed Belt (T223). Turning the Lever to the left will engage the High Speed Belt (T223). If Drive Belt slips when lever is turned left or right see the following steps.

**Slipping Drive Belt -** If Drive belt slips, makes noise or does not allow travel of mower, check the following items. Inspect the condition of the Belt and replace if frayed, cracked, excessively stretched or damaged. Inspect the condition of the Idler Control Spring (T30S) for damage. Inspect all pulleys, springs and levers in the drive control area for excessive wear or any other damage and renew as needed.

**REPLACING BLADES -** See the **BLADE SHARPENING** under the **ADJUSTMENTS AND ROUTINE SERVICING** Section.

## MULCHING MOWER

**HOW TO MULCH EFFECTIVELY -** No mulching mower can efficiently mulch grass that has grown abnormally tall. Attempting to do so will cause grass clippings to ball and will leave a mess on the lawn. Therefore, the key to effectively mulching is to mow often. However, it is also important not to cut the grass too short. Mowing too short weakens the grass and increases the chances of weeds, pests and other injuries. A good rule of thumb is to NEVER cut more than one-third the length of the grass blade or more than one inch. To adjust your mower for mulching, make sure your discharge chute is closed so grass clippings cannot escape being cut several times. To close chute, simply slide chute toward mowing deck and tighten knob. **REMEMBER ALWAYS TURN ENGINE AND BLADES OFF BEFORE OPENING OR CLOSING SIDE CHUTE.**

Set your mower at a tall setting to allow clippings to easily fall into the lawn. For warm season grasses, set your blade height at 2 1/2 to 3-1/2 inches; for cool season grasses set your blade height at 1-1/2 to 2-1/2 inches. It is also important to always use sharp mower blades to create fine clippings which decompose quickly.

**THE QUICK CHANGE FEATURE** - Your Swisher Mulching Mower has the built-in flexibility to convert into a regular side-discharge mower within seconds. Side-discharge mowing is necessary when mowing grass that has grown to tall to mulch.

To change Mulching Mower to side discharge, stop engine and make certain all moving parts have stopped, open the quick-change chute by simply unscrewing the Knob located on the right side of the mower deck. The chute is spring loaded and will open gently. After mowing with the chute open, close the chute and make another pass over the grass clippings mulching them into fine clippings.

**THE SWISHER VARIABLE SPEED FOOT CLUTCH** - Swisher Mulching mowers are equipped with a variable speed foot pedal which is controlled by the right foot. It works similar to the accelerator in a car. Varying the speed by using the foot pedal clutch will not effect the speed of the blade rotation because the engine r.p.m. remains unchanged. The more you push downward the faster you go. When you slowly lift foot from pedal, the speed slows in relation to the amount of pressure released from pedal. Completely withdrawing foot from the pedal will cause the mower to automatically brake and stop.

If additional variation to the ground speed of the mower is needed, it may be accomplished by changing the throttle setting of the engine. However, this may effect the quality of the grass cutting because blade speed is directly propotionate to the r.p.m. of the engine.

Minor adjustments can be made if the variable speed system causes the mower to stop too abruptly or to coast slightly after disengagement. Contact your authorized Swisher Dealer or the Swisher company for details.

## **SWEEPER/COLLECTOR MOWERS**

The Sweeper Mower can provide a manicured finish for your lawn if used properly. To enjoy the best results possible, the height, type and condition of your grass and the speed at which you mow will need to be considered. Keep in mind, the sweeper mechanism is automatically engaged any time the blades are engaged.

**MOWING HINTS** - The Sweeper operates well even in tall grass. However, as with all collecting systems, it works better when the lawn is cut regularly -before the grass grows unusually tall. This not only effects the appearance of your lawn but reduces the number of times you need to tip and empty the collector.

After the initial mowing with this mower, you may notice areas of grass that appear unevenly cut. As grass undergrowth usually grows outward instead of upward, the sweeper has to lift the grass blades before cutting. A second mowing of the uneven areas should help the appearance. Ongoing, regular mowing with your Sweeper Mower will help prevent the undergrowth from re-establishing and will encourage a thicker and healthier lawn.

The Sweeper performs best in high gear. However, when mowing very tall or thick grass, we recommend using "low" gear while maintaining a high throttle setting. Mowing at too slow of a speed may cause "over-brushing" to occur as the sweeper brushes would repeatedly strike the same area. If the tips of your grass turn brown within a few days of mowing, the length of the bristles may need adjustment. (See Brush Adjustment.)

**STRIPING** - You can achieve the same "striping" for your lawn with your Swisher Mower as the professionals perfect on baseball fields and golf courses. To do this, mow in a back and forth manner - cutting in the opposite direction and directly against the previously mowed path. The brushes sweep the grass of alternate paths in opposite directions.

**POSITIONING AND REMOVING COLLECTOR** - When placing the collector onto the mower, lift the deflector shield covering the rear discharge opening of the mower and place the arms of the collector securely into the respective slots.

The collector is easily removed for storage or for mowing without the collector. Simply lift the arms of the collector simultaneously out of the slots. Make certain the deflector shield covers the rear discharge opening of the mower after removing the bag.

**EMPTYING THE COLLECTOR** - Be sure to disengage and stop engine before emptying the collector. Then, simply pull the rear support bar of the collector up toward the mower. The pile of clippings or leaves will fall almost directly below the collector.

**USING THE SWEEPER WHEN COMPOSTING** - For those interested in composting their yard debris, the easy-empty design of the bag will of great service. This allows you to gather your clippings in one place without ever having to leave the driver's seat.

**USING THE SWEEPER WHEN MULCHING** - If your mower is not equipped with a mulching attachment, you can still use your sweeper to mulch. Simply empty the clippings into a pile. Re-cut the pile several times to get the reduced volume desired. The valuable nutrients in these clippings can either be returned to the soil by spreading the clippings onto the lawn or they can be added to your composter.

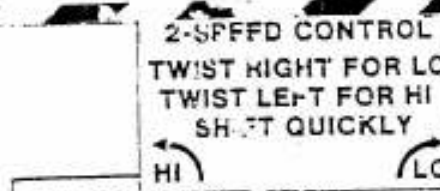
**BRUSH ADJUSTMENTS** - The sweeper brush has been cut at the factory to the most commonly used length. However, the length of brush can be easily shortened if necessary.

First, turn the engine off and disconnect the spark plug wire. Then take a sharp pair of scissors and simply cut the bristles to the desired length. Cut the same amount off all three brushes, cutting completely across the length of the brush. To reduce the possibility of cutting the bristles too short, check the performance of the Sweeper brush after each 1/2 inch trim.

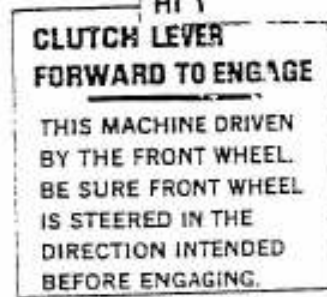
**BAG AND BRUSH REPLACEMENT** - The bag is subject to deterioration and wear during normal usage. Inspect the bag periodically for tears, holes or weak spots. Replace when needed. Replacement bags and brooms are available from your local Swisher Mower dealer or call the factory at (816) 747-8183.

## MOWER DECALS

ALL DECALS SHOULD BE IN PLACE AND IN LEGIBLE CONDITION BEFORE OPERATING THE MOWER. IF ANY DECALS HAVE BEEN REMOVED OR DISFIGURED, REPLACE IMMEDIATELY. REPLACEMENT DECALS ARE AVAILABLE UPON REQUEST AT NO

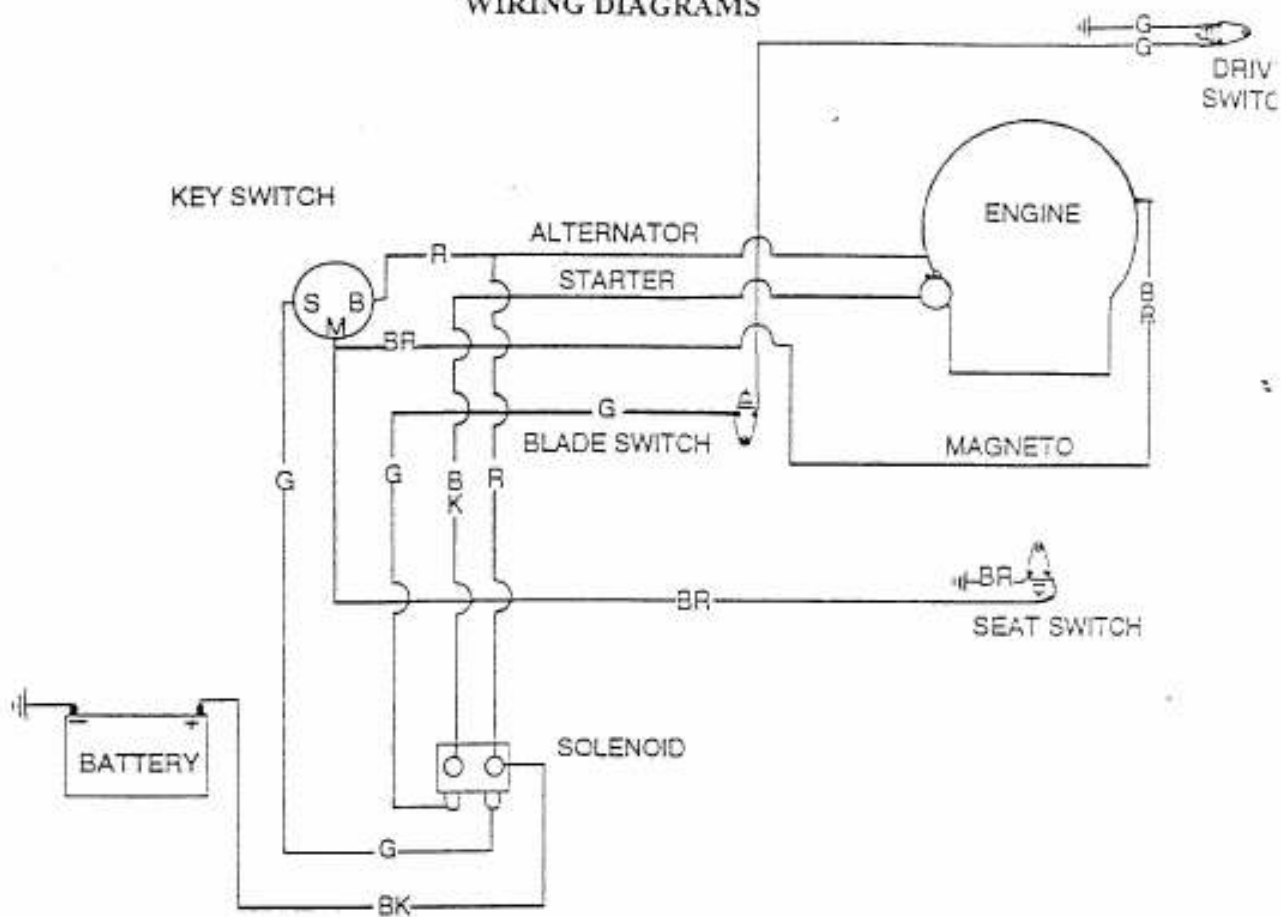


Two-speed models

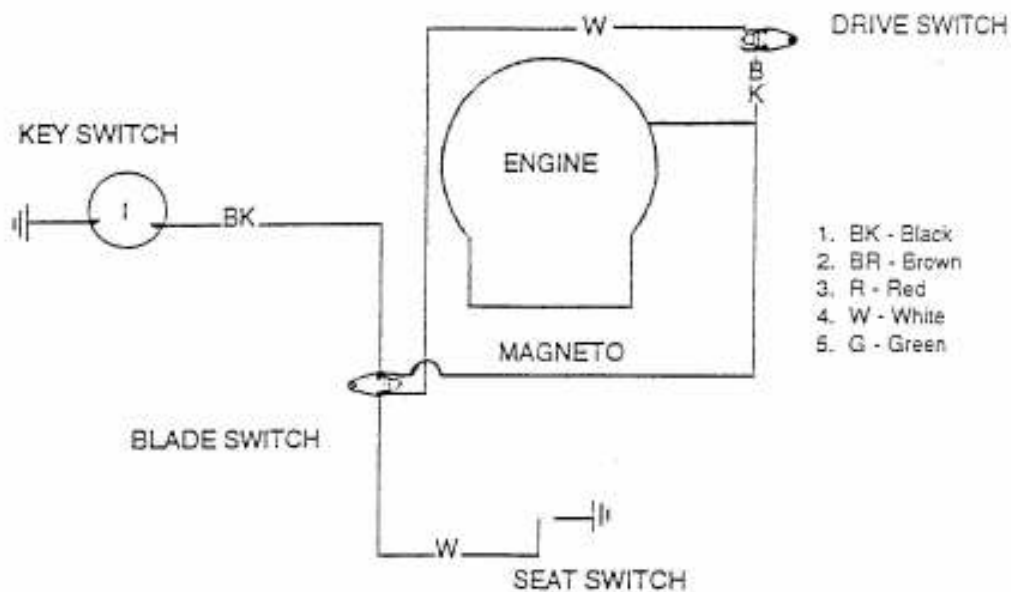


Two-speed models only!

WIRING DIAGRAMS



12 VOLT STARTER



1. BK - Black
2. BR - Brown
3. R - Red
4. W - White
5. G - Green

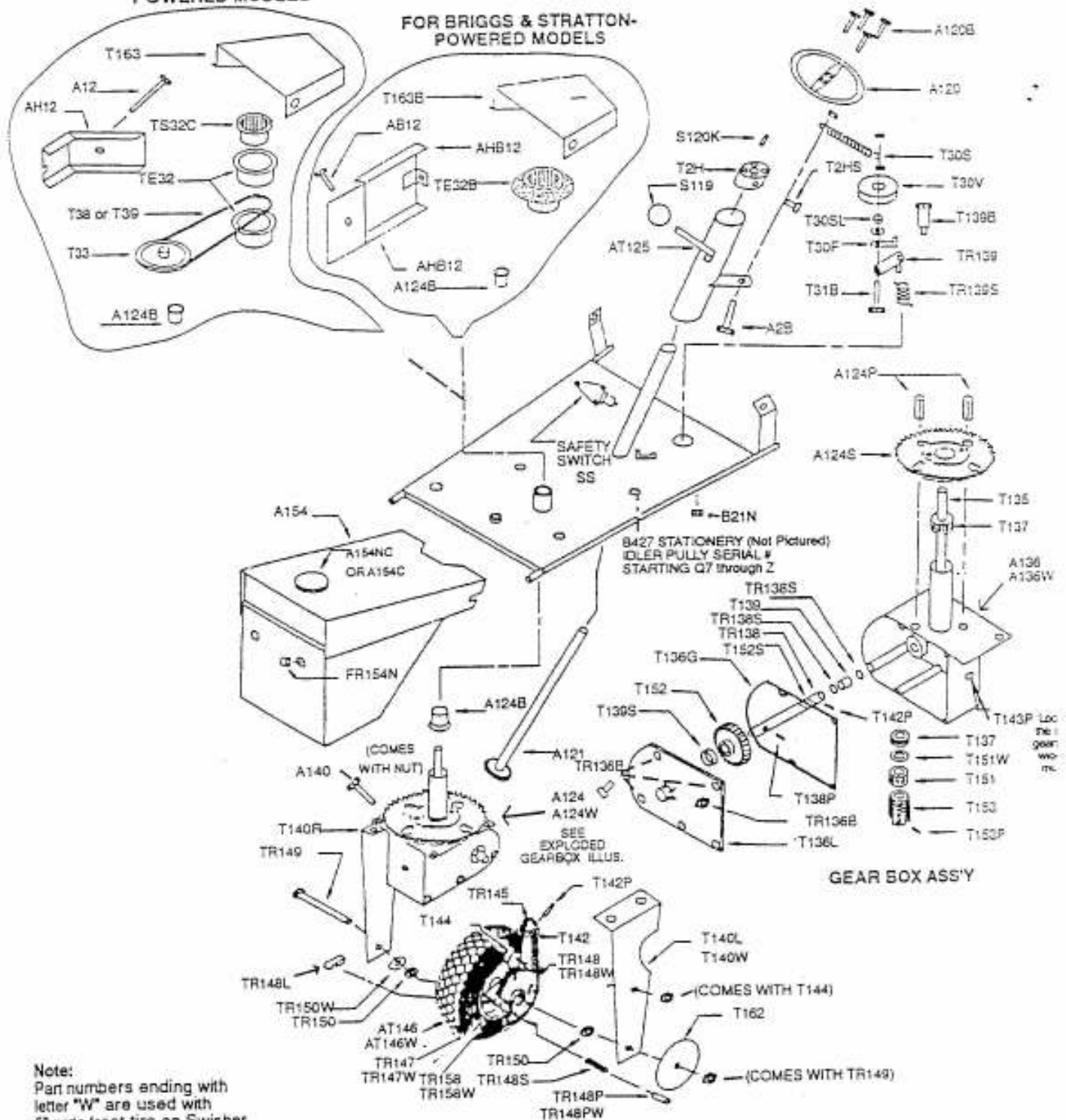
110 VOLT & RECOIL STARTER

# TRACTION DRIVE, GEAR BOX AND STEERING ASSEMBLIES

For mulching models, see "Mulching Mower" Illustration and Parts List

FOR TECUMSEH-POWERED MODELS

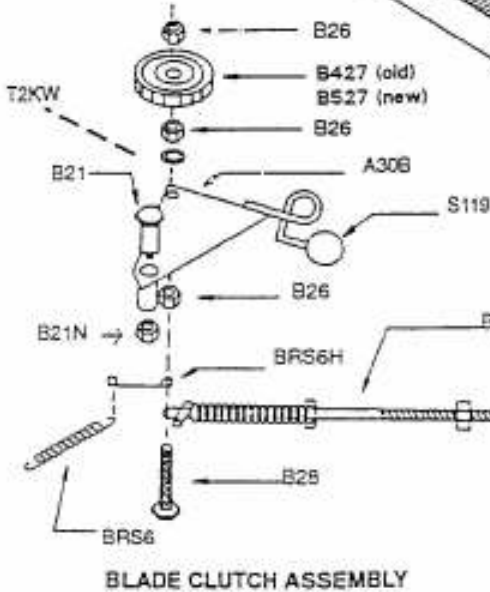
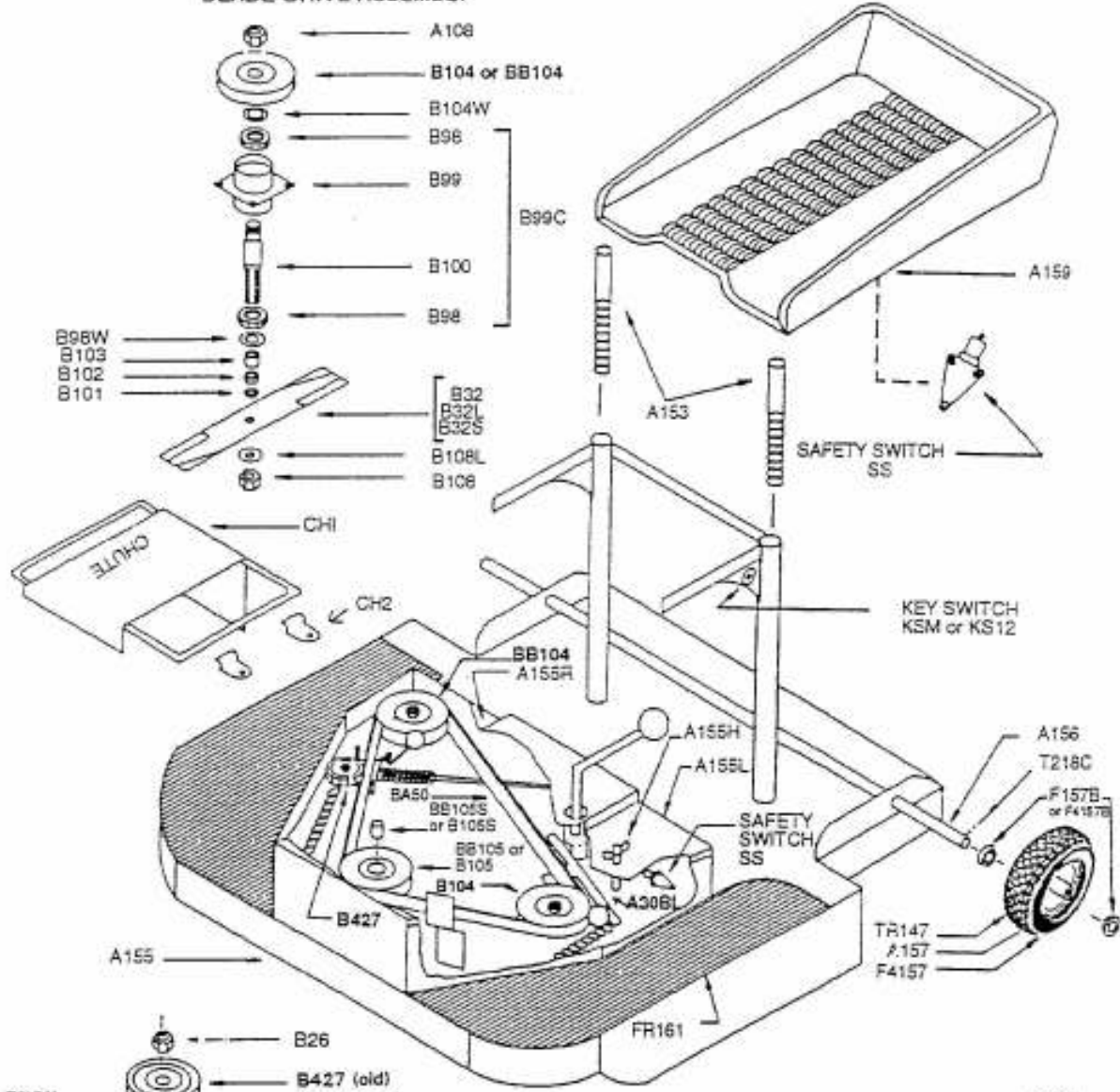
FOR BRIGGS & STRATTON-POWERED MODELS



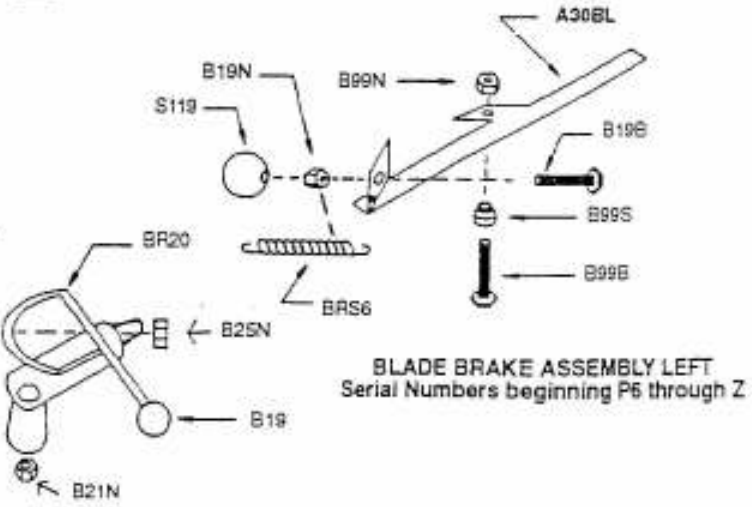
# BLADE DRIVE AND CLUTCH ASSEMBLIES

For Mulching Models, see "Mulching Mower" Illustration and Parts List

## BLADE DRIVE ASSEMBLY



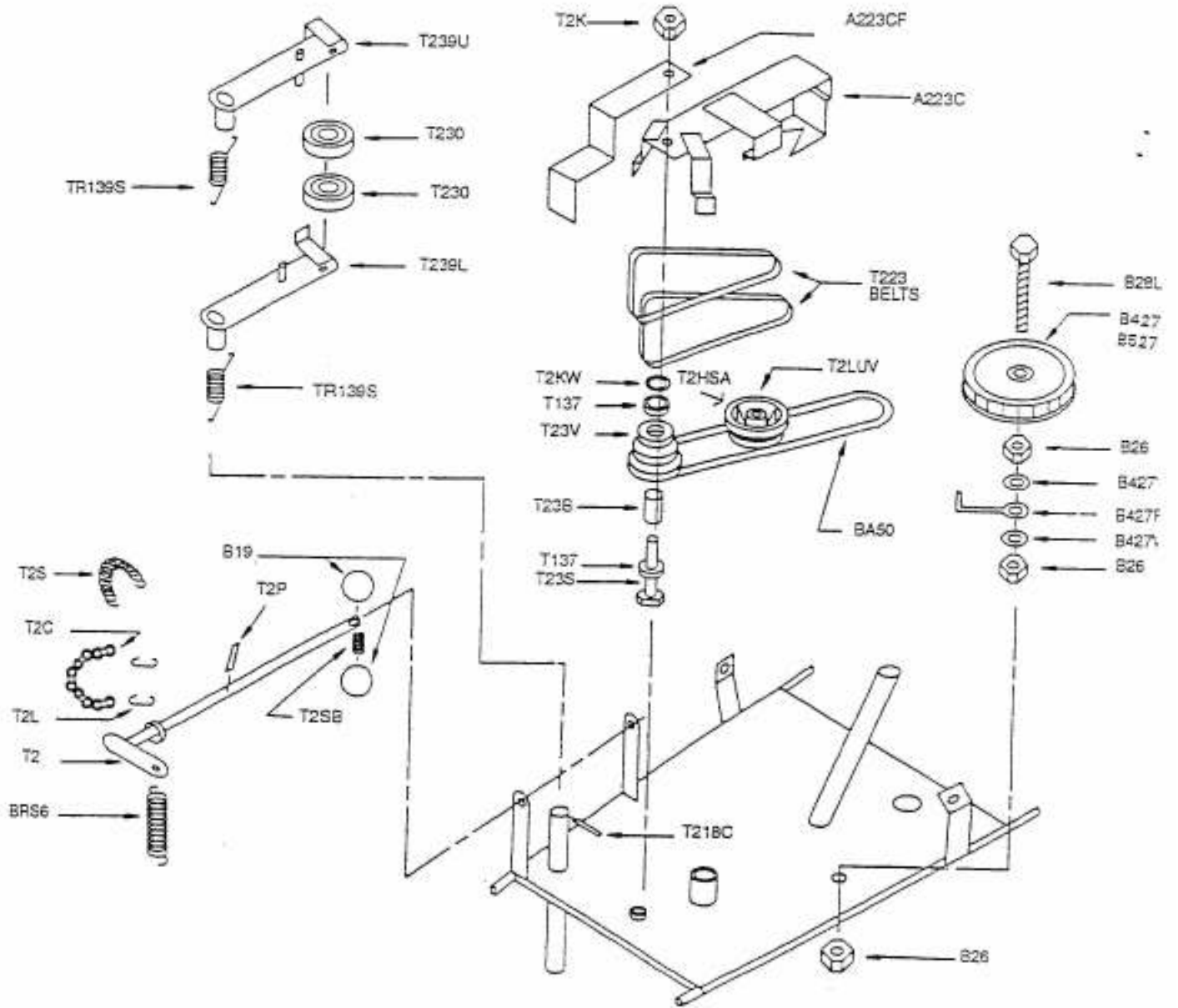
## BLADE CLUTCH ASSEMBLY



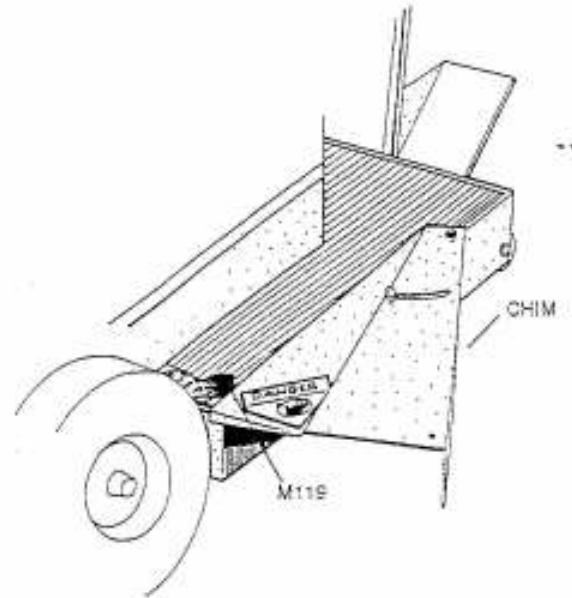
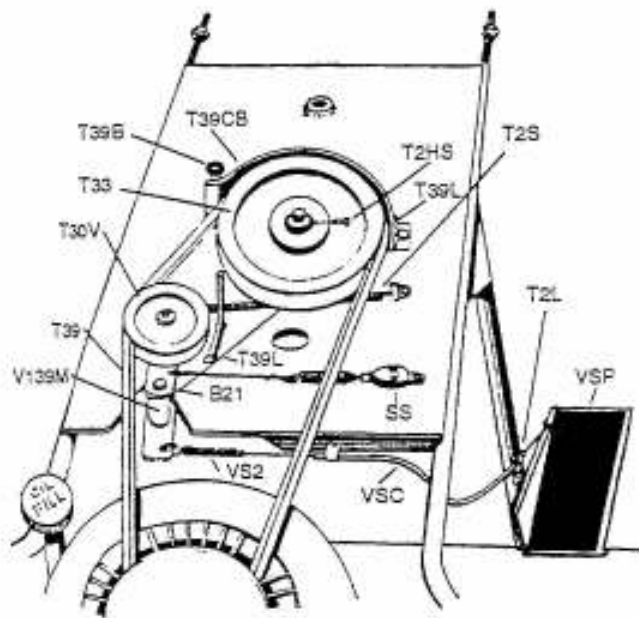
BLADE BRAKE ASSEMBLY LEFT  
Serial Numbers beginning P6 through Z

# TWO SPEED DRIVE

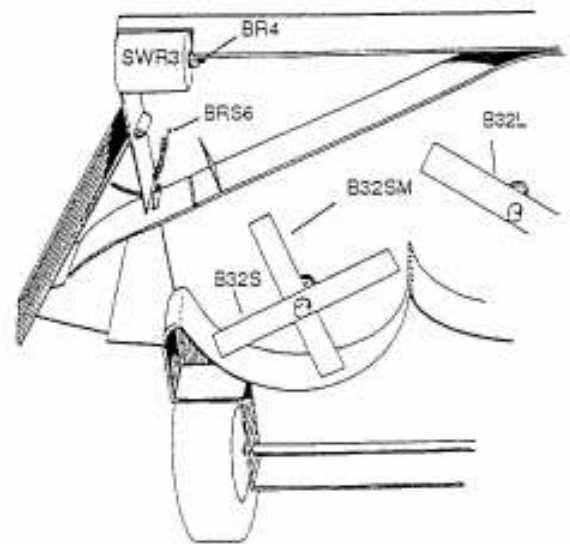
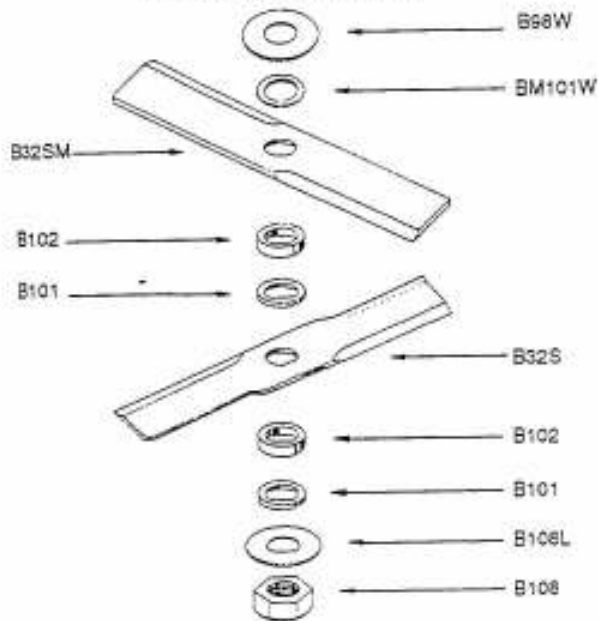
For Single Speed Models, See "Traction Drive, Gearbox and Steering" Illustration



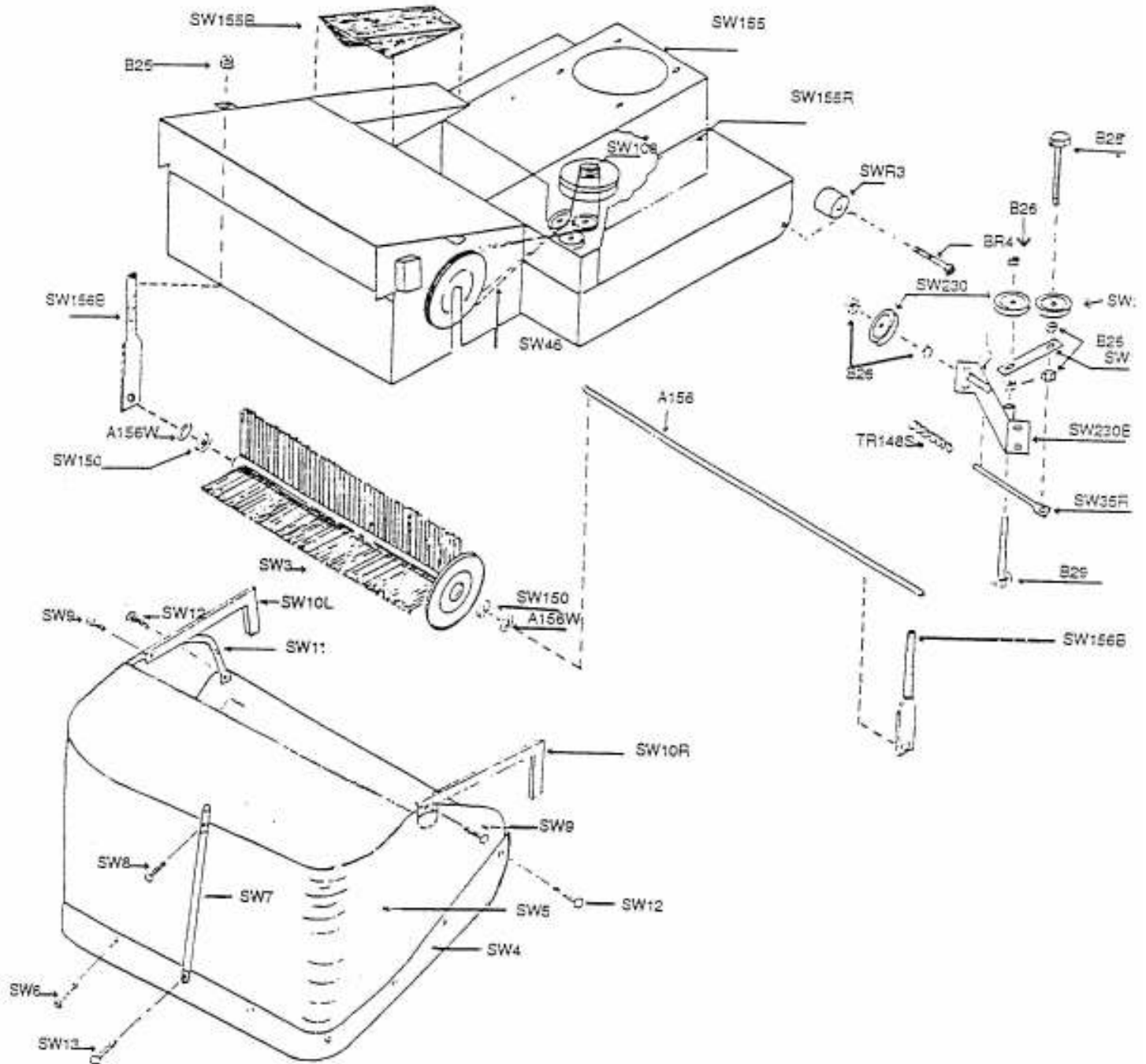
# MULCHING MOWER



## BLADE ASSEMBLY



# SWEEPER/COLLECTOR



## REPLACEMENT PARTS

WHEN ORDERING PARTS, STATE MODEL AND SERIAL NUMBER OF MOWER

### STEERING ASSEMBLY

A120	Steering Wheel
A120B	Cap Screw
A121	Steering Shaft & Sprocket
A124B	(2) Flanged Bushing (upper & lower)
A124P	(2) Steering Gear Pin
A124S	Steering Gear
A2B	Bolt for Spring/T30S
S120K	Key to line up Steering Hub with Shaft
SS	Safety Switch
TH	Steering Wheel Hub
THS	Set Screw

### GEAR BOX ASSEMBLY

A124	Gear Box Assembly Complete, includes: Gear Box Assembly, Wheel Brackets (T140L & T140R) and Steering Gear (A124S)
A124W	Gear Box Assembly Complete (for Mowers with 5" Wide Front Tire)
A136	Gear Case
A136W	Gear Case (for Mower with 5" wide Front Tire)
A140	(4) Flat Head Screws (includes nuts)
T125	Worm Shaft-when assembling, drill 3/16" pinhole
T136G	Gasket
T136L	Gear Case Lid
T137	Bearing
T138P	Gear Pin (solid)
T139	Roller Bearing
T139S	Retainer Ring
T140L	Wheel Bracket, left
T140R	Wheel Bracket, right
T140W	Wheel Bracket, right and left welded together
T142P	Pin for Sprocket (split)
T143P	Gear Box Oil Plug
T144	Chain Idler
T151	Thrust Bearing
T151W	Washer
T152	Gear
T152S	Gear Spacer
T153	Worm Gear
T153P	Worm Pin
TR124L	Gear Box Lube, Box. (not shown)
TR136B	Bolt with Nut
TR138	Gear Shaft
TR138S	Seal

### TRACTION DRIVE & RELATED PARTS (not including Gear Box)

A124B	(2) Flanged Bushings (upper & lower)
A140	(4) Flat Head Screw
AT125	Drive Control Assembly
AT146	Front Wheel & Tire Complete
AT146W	Front Wheel & Tire Complete (for Mower with 5" wide Front Tire)
B21N	Keypin 3/8" x 16
CL41	Master Link for 3/8" Wide Drive Chain (not shown)
CL420	Master Link for 1/2" Wide Drive Chain (not shown)

S119	Knob
SS	Safety Switch
T139B	Shoulder Bolt
T142	Sprocket
T142P	Pin for Sprocket/T142 (split)
T144	Chain Idler
T162	Chain Guard
T163	Belt Guard (for Tecumseh)
T163B	Belt Guard (for Briggs & Stratton)
*T30	Replaced by T30V
T30F	Belt Release Finger
T30S	Idler Control Spring
T30SL	Idler Spacer
*T30V	Idler Clutch Pulley - 2 3/4" Diameter, V-type
T31B	Bolt for Idler Clutch Pulley/T30V
T33	Drive Pulley (for Tecumseh engine)
T38	Drive Belt, 38" - Outside Diameter
T39	Drive Belt, 39" - Outside Diameter
TE32	Top Engine Pulley (for Tecumseh)
TE32B	Top Engine Pulley (for Briggs & Stratton)
TR139	Idler Control Arm
TR139S	Spring
TR145	Drive Chain
TR147	Air Tire (For Air Tire with wheel, order Part # AT146)
TR147W	Air Tire (for Mower with 5" wide Front Tire)
TR147T	Tube for Air Tire (not shown)
TR147TW	Tube for Air Tire (for Mower with 5" wide Front Tire)
TR148	Drive Sprocket & Hub Assembly
TR148W	Drive Sprocket & Hub Assembly (for Mower with 5" wide Front Tire)
TR148L	Lock-Pin Lever & Rivet
TR148P	Lock-Pin
TR148PW	Lock-Pin (for Mower with 5" wide Front Tire)
TR148S	Lock-Pin Spring
TR149	Front Axle Bolt (includes Nut)
TR149W	Front Axle Bolt (includes Nut) (for Mower with 5" wide Front Tire)
TR150	Bearing
TR150W	Washer (heat treated)
TR158	Front Wheel
TR158W	Front Wheel (for Mower with 5" wide Front Tire)
TS32C	Starter Cup (for Tecumseh engine)

\*The T30V, V-type pulley replaced the T30 pulley as it has a deeper groove and performs better.

### BLADE DRIVE, CLUTCH AND BRAKE ASSEMBLIES

A108	Upper Blade Nut
A30	Blade Idler Arm Assembly (without Knob/S119)
A30B	Blade Idler Arm Assembly (with Knob/S119)
A30BL	Blade Arm Assembly including: Knob(S119), Bolt(B19B) & Nut (B19N)
B100	Blade Shaft (left and right)
B101	Blade Spacer 1/4"
B102	Blade Spacer 1/2"
B103	Blade Spacer 1"
*B104	Blade Pulley (for Left Pulley)
*BB104	Blade Pulley (for Right Pulley)
B104W	Washer - 3/4"

B105	Blade Drive Pulley (for Tecumseh)
BB105	Blade Drive Pulley (for Briggs & Stratton)
B105S	Spacer for Engine Pulley/B105
BB105S	Spacer for Engine Pulley/BB105
B108	Blade Nut (left or right)
B108L	Blade Nut Lock Washer
B19	Knob
B19B	Bolt for Knob/B19
B19N	Nut for Knob/B19
B21	Shoulder Bolt (with nut)
B21N	Keppnut - 3/8" x 16
B25N	Nut - 5/16"
B25R	Idler Control Rod and Spring (includes Nut)
B26	Nut
B28	Bolt (for Idler Pulley)
B32	Blade Set (18" & 14")
B32L	Long Blade (18" - left blade)
B32S	Short Blade (14" - right blade)
B427	Idler Pulley - 3 1/2" Diameter B527 for riders ser. # Y50888 and newer.
B98	Blade Bearing
B98W	Washer
B99	Blade Bearing Housing (left or right)
B99B	Cap Screw
B99C	Housing, Complete includes: (2) Bearing/B98, Housing/B99 & Blade Shaft/B100
B99N	Nut
B99S	Spacer
BA50	Blade Belt
BR20	Idler Control Lever Assembly
BR56	Return Spring
BRS6H	Wire Link - Hooks BRS6 to B427 (Used when Spring is located below Idler)
BRS6L	Threaded Metal Tab - holds BRS6 to B427 (Used when Spring is located above Idler) (Not Shown)
S119	Knob

\*For better performance, the BB104 will be used as the Right Pulley on all A-Model mowers. The B104 Blade Pulley will be used as the Left Blade Pulley on all A-Model mowers.

### AIR FILTERS

FF6	Air Filter for 6 HP Tecumseh (not shown)
FF8	Air Filter for 8 HP Briggs & Stratton (not shown)
FF10	Air Filter for 10 HP Tecumseh (not shown)

### AXLES, WHEELS & RELATED PARTS

A156	Rear Axle
A157	Rear Wheel
AT146	Front Air Tire, Tube & Wheel Complete
F157B	Rear Wheel Bearing (1 3/8" outside diameter)
F4157	Rear Air Tire, Tube & Wheel Complete
F4157B	Rear Wheel Bearing (1 1/4" outside diameter)
T218C	(2) Cotter Pins for Rear Tires
TR147	Air Tire - for front or rear
TR147T	Tire Tube - for front or rear (not shown)
TR149	Front Axle Bolt (includes nut)
TR150	Front Wheel Bearing
TR158	Front Wheel
TS	Tire Sealer, 8 oz.

### BATTERY & RELATED PARTS

BAT	12 Volt Battery, Booc Dry (not shown) (Battery has never contained acid)
BCL	Battery Cable - 19 1/2"

BCS	Battery Cable - 7"
BHOLD	Battery Hold Down

### CHUTE & RELATED PARTS

CH1	Chute
CH2	(2) Chute Clips (includes Bolts & Nuts)

### FRAME, BELT COVERS, FLOOR MATS, SAFETY SWITCHES & RELATED PARTS

A155	Complete Frame Assembly
A155G	Rubber Grommet for Belt Covers/A155L & A155R (not shown)
A155H	(2) Hair Pin Latch for Belt Covers (not shown)
A155L	Belt Cover, left (not shown)
A155R	Belt Cover, right (not shown)
A155V	Rubber Anti-Vibration Pads
FR161	Floor Mat Set (not shown)
SS	Safety Switch

### HEAT SHIELD & RELATED PARTS

A12	Bolt for Shield (for Tecumseh)
AB12	Bolt for Shield (for Briggs & Stratton)
AH12	Heat Shield (for Tecumseh)
AHB12	Heat Shield (for Briggs & Stratton)

### HOOD, FUEL TANK & RELATED PARTS

A154	Hood and Fuel Tank
A154C	Gas Cap, Push-In
A154G	Grommet for Push-In Gas Cap/A154C
A154NC	Gas Cap, Twist-On
FLH	Fuel Line Hose, clear PUC vinyl
FR154N	Hood Nut

### SEAT & RELATED PARTS

A153	(2) Seat Spring & Push Rod Assembly
A159	Seat (includes frame, black seat cover & foam)
A159C	Seat Cover - black (not shown)
A159F	Seat Foam (not shown)

### SOLENOIDS/STAPLER RELAYS & STARTERS

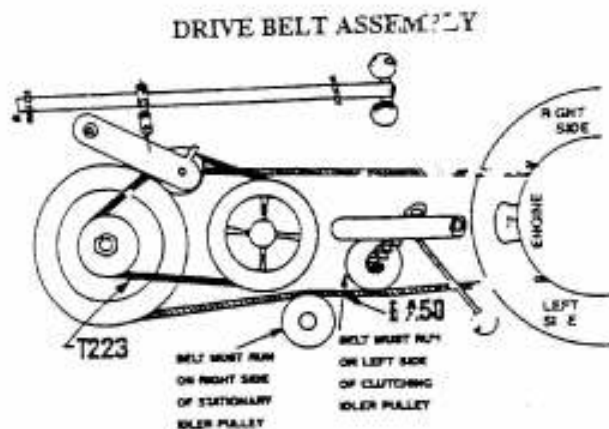
KSM	Key Switch - for Recoil and 120 Volt Models (not shown)
KS12	Key Switch - for 12 Volt Models (not shown)
SOL OLD	Starter Relay - push button (not shown)
SOL NEW	Starter Relay - for Key Switch/KS12 (not shown)

### TWO SPEED DRIVE

A223C	Two-Speed Belt Release Cage
A223CF	Belt Release Finger
B19	(2) Knob
B26	(3) Nut
B28L	Bolt for Idler Pulley
B427	Idler Pulley - 3 1/2" Diameter
B427F	Finger for Idler Pulley
B427W	Washer for Idler Pulley

*BA50	Drive Belt - 1986 and Newer Models (For Older Models, order Part #T249) *See Diagram Below
BR56	Two-Speed Shift Lever Spring
T177	(2) Bearing
T2	Two-Speed Shift Lever
T2C	Two-Speed Clutch Chain
T2HS A	Set Screw for Two-Step Pulley/T2LUV
T2K	Nut
T2KW	Hardened Steel Washer
T2L	(2) Two-Speed Clutch Chain Linkage
T2LUV	Two-Step Pulley
T2P	Two-Speed Pin
T2S	Two-Speed Spring
T2SB	Two-Speed Stud Bolt
T2HC	Cotter Pin
T2J	(2) 23" Belt (for High or Low gear)
T2I0	(2) Two-Speed Idler
T2B	Bearing Spacer
T2S	Cap Screw
T2V	3 Groove Pulley
T29L	Two-Speed Idler Arm (Lower)
T29U	Two-Speed Idler Arm (Upper)
*T249	Drive Belt - 1985 and Older Models (For Newer Models, order Part #BA50) *See Diagram Below
TR139S	(2) Spring

\*Ordering Belt - If your mower has the B427 pulley as pictured below, order Drive Belt #BA50. If your mower does not have a B427 Pulley, order Drive Belt #T249.



#### THROTTLE CABLE

THRCB Throttle Cable & Clamp (not shown)

#### MULCHER AND VARI-SPEED PARTS

The parts listed and illustrated here are the parts that differ from the regular side-discharge mower. For information on any other parts, please refer to regular side-discharge mower lists and illustrations.

B101	(2) Blade Spacer 1/4"
B102	(2) Blade Spacer 1/2"
B108	Blade Nut
B108L	Blade Nut Lock Washer
B12M	12" Mulching Blade
B21	Shoulder Bolt with Nut

B32L	Long Blade - 18"
B32M	Blade Set - 18", 14" & 12"
B32S	Short Blade - 14"
B98W	Washer
BM101W	Washer
BR4	Bolt for Anti-Scalp Roller
BR56	Spring
CH1M	Quick-Change Chute
M119	Chute Adjuster Knob
SS	Safety Switch
SWR3	Anti-Scalp Roller
T2HS	Set Screw
T2L	Chain Linkage
T2S	Spring
T30V	Idler Clutch Pulley - 2 3/4", v-type
T33	Drive Pulley
T39	Belt
T39B	Bolt
T39L	Brake Link
T39CB	Brake
V139M	Idler Arm Assembly
V52	Spring
V5C	Cable
V5P	Veri-Speed Drive Pedal

#### SWEEPER/COLLECTOR PARTS

A155L	Belt Cover, left
A156	Rear Axle
A156W	(2) Washer
B25	Self-Locking Nut
B26	Nut
B28	Bolt for Idler Pulley
B29	Bolt for Sweeper Pulley
BR4	Bolt for Anti-Scalp Roller
SW10L	Left Arm of Grass Collector
SW10R	Right Arm of Grass Collector
SW108	Nut Pulley Combination
SW11	Tubular Frame for Grass Collector
SW12	(2) Bolt & Nut Set (for front of Collector Sides)
SW13	Bolt & Nut (for lower hole of Rear Brace/SW7)
SW139	Bracket for Sweeper Pulley
SW150	(2) Bearing for Brush Assembly
SW155	Frame Assembly
SW155B	Battery Cover
SW155R	Belt Cover, Right
SW156B	(2) Axle Bracket
SW230	Pulley for Belt
SW230B	Bracket for Pulley
SW3	Brush Assembly (brush and pulley)
SW35R	Idler Rod for Pulley Assembly
SW4	Grass Collector Bottom
SW46	Brush Belt
SW5	Grass Collector Mesh
SW6	Screw & Nut
SW7	Rear Brace for Grass Collector
SW8	Bolt & Nut (for Rear Brace of Collector)
SW9	(2) Bolt & Nut (for Arms of Collector)
SWR3	Anti-Scalp Roller
TR148S	Lock-Pin Spring for Front Wheel

#### MULCHING ATTACHMENT KIT FOR SWEEPER

MAK	Mulching Attachment Kit Includes Mulching Attachment, Mulching Blade, 4 Bolts & Nuts, 1/2" Spacer, and 1/4" Spacer and Washer
-----	--